

BREMER ECHOES

Our Forebears Past, Yet Present Still



ISSN 2208 – 2131

Ipswich Genealogical Society inc

*Best Wishes for a Safe and Happy Christmas
and New Year*

Volume 41 No 3

November 2023

RESEARCH ROOMS & LIBRARY

“Brigg House”

Cooneana Heritage Centre
1041 Redbank Plains Road,
New Chum, Ipswich 4303
Phone: 07 3282 6454 / 3282 3067
Or email: secretary@igs.org.au
Website: <http://www.igs.org.au>

MONTHLY MEETING: SECOND Tuesday of the month at 9.30am
[except January]

“Brigg House”

**Cooneana Heritage Centre,
1041 Redbank Plains Rd,
New Chum 4303**

**(Until further notice monthly meetings will be at 4 Grenadier Circle
Ebbw Vale) 07 3282 3067**

Dues are payable by 30th September.

Subscriptions Single Membership \$40

Family 2 members residing at the same address \$55

Journal only subscription [Posted or emailed] \$10

Visitors welcome at Research Library per day \$20; ½ day \$10; Research
undertaken by post – Initial Research Fee \$30

Additional Research fees charged at rate of \$25 per hour or part thereof.

Annual Membership includes Society's magazine Bremer Echoes

February, July, & November, posted or emailed.

Out of town members entitled to research on their behalf from Society records.

OPENING HOURS

Monday 9.30am to 1.00pm

Thursday 9.30am to 2.30pm

Saturday 9am to 12 noon – Closed Sunday

Closed all Public Holidays

**“Brigg House” will close for the Christmas Break 12 noon Saturday 16th
December and open 9.30 am Monday 15th January 2024**

Cover Illustration: A selection of Christmas Cards from c1950 – 60s

BREMER ECHOES

ISSN 2208 –2131

Volume 41 No 3 November 2023

The Journal of the IPSWICH GENEALOGICAL SOCIETY INC

The First Genealogical Society in Queensland 1977



<i>Page 4</i>	<i>Railway Stations from Roma St. West</i>
<i>Page 7</i>	<i>Queensland Times Extracts</i>
<i>Page 10</i>	<i>President's Report</i>
<i>Page 12</i>	<i>Christmas Cards</i>
<i>Page 13</i>	<i>Donated Books</i>
<i>Page 14</i>	<i>Football History</i>
<i>Page 16</i>	<i>Member's Interests</i>
<i>Page 18</i>	<i>Financial Statement</i>

From the Editor: Our AGM was held on 12th September in one of the rooms in the historic "Cooneana" homestead built in 1868. We thank the Ipswich Historical Society for the use the room in this building, a part of the history of Ipswich. It was no surprise that the Executive was re-elected, and hopefully we can guide the Society for another successful year. *Irma*



NEW MEMBERS: We welcome our new and re-joining members and wish them success with their research. Marilyn Roberts; Maria Bulmar; Pauline Constable, John Kent
Re-joined; Susan Tutin; Phillip Shaw & Janelle Pickering;

**"Cooneana " Homestead at Cooneana Heritage Centre.
Courtesy Ipswich Historical Society Inc**

RAILWAY STATIONS WEST FROM ROMA STREET BRISBANE

(Extract from Lineside Guides, Trainaway Tours" Ken Mitchell 2008)

ROMA STREET is the original terminus of the line to Ipswich.

MILTON (1.50km) The location was first referred to as "Bishopbourne" as it was close to the residence of the Bishop of the Church of England Brisbane. *(The XXXX Brewery and Lang Park Stadium are close to the railway station.)*

AUCHENFLOWER (2.71 km) Opened in 1887 and was named after the residence of Sir Thomas **McIlwraith**. In the 1974 floods the waters of the Brisbane River covered the tracks through the platforms. The large Wesley Hospital is adjacent.

TOOWONG (3.73km) An original station. With duplication an island platform with a fine brick building was provided. Another island platform was added with quadruplication. The air space over the tracks is now occupied by a shopping centre known as "Toowong Village" and the "fine brick building" was demolished in the process of its construction. The narrow bridge over the railway at the end of the platform causes congestion with today's volume of traffic. Toowong means native cuckoo.

TARINGA (5.21km) Opened in 1878. During quadruplication works the office was relocated to the overhead bridge which is accessed by rather steep steps, contributing to the unpopularity of this type of construction.

INDOOROOPILLY (6.63km) Temporary terminus until the Albert Bridge was completed (and again from 1893 to 1895 due to the original bridge being washed away in the 1893 flood). Some suburban trains terminated here up until the mid-1940s.

CHELMER (7.71km) Opened about 1881 but moved 12 chains north to its present location about 1899.

GRACEVILLE (8.72km) Opened in 1884. It had a level crossing which was eliminated in 1916.

SHERWOOD (9.94km) Original terminus of the line from Ipswich at which stage it was known as "Oxley West". The adjacent level crossing is the only one on the quadruplication.

CORINDA (10.83km) Named after Sir Arthur Palmer's cattle station and dates from 1884 when the branch line to Woolloongabba and the South Brisbane wharves was built.

OXLEY (12.53km) An original station and for over 100 years was a regular terminus for suburban trains. Terminating facilities were removed with electrification.

DARRA (15.27km) A stopping place was provided at a level crossing at this location in 1876. The Queensland Cement and Lime Company's factory adjacent to the station was a source of complaint for the local residents for many years.

With the establishment of the satellite town of Inala, Darra and Oxley became change points for co-ordinated rail/bus services. *(A new railway has been constructed to Springfield.)*

WACOL (19.22km) Opened as a stopping place about the same time as Darra and originally called “**Wolston**” after Matthew **Goggs**’ residence (now a National Trust property). Watering facilities were provided for locomotives in steam days. The name Wolston was being confused with Wilston on the Enoggera branch so in 1927 the name was changed. As a weigh bridge had been provided since 1914 to weigh coal from the West Moreton Field the new name was a corruption of “weigh coal”!

GAILES (20.84km) Passenger platforms were provided here for the Goodna Amateur Turf Club in 1919 with the name of **Dingo Hill**. The name Gailes was adopted in 1925. This station lies just inside the boundary of the city of Brisbane whereas Gailes is actually a suburb of Ipswich. A popular golf course is adjacent.

GOODNA (22.79km) An original station. A new building was constructed a few years ago to replace the one which was burnt down. The station building was almost covered in the 1974 floods.

REDBANK (26.09km) An original station albeit moved several metres towards Brisbane when being rebuilt in 1914. Queensland Rail for many years had their principal diesel workshop close to the station.

RIVERVIEW (28.41km) Opened as a stopping place in 1875 and was known as **Moggill Ferry** until 1881.

DINMORE (30.08km) Opened in 1884 at the junction of Gulland’s private railway which had been built in 1881 to service the coal mines in the New Chum area. This line subsequently became part of the QR system and also served brickworks and a pottery. It was considerably shortened, then relocated when the Warwick by-pass was opened and is now closed. A third platform, built in the fifties, seldom saw a train and has been removed with the area incorporated into the car park.

EBBW VALE (31.48km) Called **St Helen’s** when it opened in 1909 but changed to Ebbw Vale which is of Welsh origin in 1910.

BUNDAMBA (33.31km) An original station whose name is a corruption of the aboriginal “Bandanba” meaning place of tomahawks. A branch line – now closed - served the coal loading facility at Box Flat as well as the Swanbank power station. It formerly continued to Redbank and passenger trains were provided for miners but the middle section of the loop was closed in the early 1970s. A platform built for the Bundamba Racecourse, is used by the Queensland Pioneer Steam Railway which operates steam trains on the Swanbank section.

BOOVAL (34.77km) A passenger platform was provided here to service one of Ipswich’s larger suburbs in 1876.

EAST IPSWICH (36.27km) Opened in 1879 as **Limestone** being renamed in 1891.

IPSWICH (37.89km) The original station was bounded by Ellenborough, Bremer, Nicholas and Union Streets and was beyond and at right angles to the present station. A grand two storey building with a roof spanning the platform and tracks was built in 1865. When the line was connected to

Brisbane trains had to reverse into and out of the platforms and this inconvenient arrangement continued for some ten years. With duplication a new single through platform with docks at each end was opened on 17th October, 1887. The single through platform (situated in a cutting) was itself inconvenient and work began on a third station in 1914 but was abandoned. Work began on the current station in 1977 with the air space above. *Now Queensland Health Plaza – Ed.*

The Fassifern line to Boonah and Dugandan (with a branch to Mt. Edwards) branched off on the western side of the station with the first section to Harrisville opened 10/7/1882. It was closed back to suburban Churchill on 30/6/1964 with this last section closing 12/8/1994.

THOMAS STREET (39.34km) Opened in 1914. Short high level platforms were provided when the electrification was extended to Rosewood in 1993. The line now crosses the Bremer River.

WULKURAKA (40.57km) This was the junction for the Brisbane Valley Line to Esk, Toogoolawah and Yarraman and was originally known as Brisbane Valley Junction. In the 1950s electrification scheme it was proposed that car sidings would be located here and the area was levelled accordingly. Tracks were removed from the third platform and a new building was constructed with electrification. The branch closed in 1993 but the formation can still be seen diverging to the right through the grass. The extension of electrification to Rosewood has caused some areas around here to be cut up for housing estates.

KARRABIN (43.14km) Two short high level platforms were provided with electrification which has also brought housing development. The Amberley Air Force Base can be seen away to the left. *(The West Moreton Anglican College is in the vicinity of the station)Ed.*

WALLOON (47.75km) An original 1875 station, which now serves a small community complete with a hotel.

THAGOONA (51.96km) The station was moved to the western side of the level crossing and two high level platforms were provided with electrification. Another new housing development is on the right just past the station.

YARROWLEA (54.39) Junction for the 8.4km branch to the Ebenezer Coal Mine opened 1 February 1990.



ROSEWOOD (56.20km) Once a busy coal mining town and junction for the branch to Marburg, opened 18 December 1911. This branch was closed in sections as the coal mines were worked out.

*The A10 - one of the first trains in Queensland
On the line west of Ipswich in 1966, the
Centenary of Queensland Rail.*

Courtesy The Workshops Rail Museum Ipswich

Queensland Times Extracts:

Q. T. 30th April 1920; republished March 1972;

BOTTLE ALLEY, NICHOLAS ST IPSWICH

“Since the construction works in connection with the erection of the ‘new railway station’ on the site between Waghorn and West Streets began the whole disposition of Ellenborough Street has been altered.

In the alteration was the pulling down of an overbridge which extended across the railway line from Union Street to Ellenborough Street, thus giving a continuous thoroughfare from the present railway station and Nicholas Street to those who resided on or had business with the West End or Woodend. It also served the worshipers of St Mary’s Church who lived in the East Ward.

ROAD LINK. This overbridge had been in use for 45 years. Prior to its erection there was a roadway right through from Nicholas to Ellenborough Street. This thoroughfare, previous to the erection of the original railway station facing Ellenborough Street, had been made by the Government of that day, after having purchased what was then private property owned by Mrs Malcolm **McLean**, “an esteemed lady resident of Nicholas Street in the good old days, and mother of Messrs James and John **McLean** of Limestone Street”.

This road was used by Cobb & Co’s coaches and other vehicular traffic for some nine years – from 1865 to 1874.

Prior to the commencement of the railway era in 1864 there was a lane – styled “Bottle Alley” – between Nicholas and Ellenborough Streets, running right through the properties of Mr William **Vowles** (later the site of Whitehouse’ Café), which was formed for the convenience of the residents in Ellenborough Street to take a short cut into Nicholas Street, so doing away with the necessity of going around the North Star corner.

HOTEL CORNER. Mr William **Vowles** also owned the property now known as the Central Hotel, and there has nearly always been a hotel there. During the mid-1850s and the latter part of the 50 and early parts of the 60 decade, Mr William **Thompson** was the lessee of the hotel under the sign of the “Horse and Jockey”.

The story goes that the reason for the lane being made from Mr **Vowles**’s property on the west side of Nicholas Street was for the convenience of customers living in Ellenborough and West Streets. This was how it got its name, “Bottle Alley”.

As to Ellenborough Street, the first hotel opened there was on the site of the now closed railway overbridge. It was known as the Traveller’s Rest, the lessee having been Mr Charles **Watkins**. During the 1860s he became an alderman and was for many years associated with the Ipswich Hospital as secretary.

After having been a pub, a ginger beer factory, and what not, it became the office of the second newspaper to be published in Ipswich,

which occurred on July 4, 1859, and was named the “Ipswich Herald”, merging eventually into the “Queensland Times” in October of 1861. FIRST STATION: Then came the railway era in 1864, the first terminal station having been erected in Ellenborough Street, the pioneer railway station in this state.

In Ellenborough Street at that period lived Mr William **Henderson** and his family, he having been a well-known carrier of those days and whose property faced the old railway station. Mr **Henderson** conceived the idea of erecting a substantial hotel. This was done and, on the two storied brick building being finished, Mr William **Trotter**, one of the early building contractors of Ipswich – and who was responsible for the erection of the present Court House in East Street in 1859 – opened it as the Commercial Hotel in the latter half of 1866. He had had the licence transferred from the hotel he had previously kept in Bell Street.

The original brick Commercial Hotel (which faced the Railway Station) disappeared in April 1916, and the present Commercial Hotel premises took its place (on a new location).

It was also at that time that the two-storied brick building of Halley’s Bakery was demolished to make way for the new railway station. Lots of other changes took place in Ellenborough Street at that time. The eastern portion of Section 6 was resumed for the railways; that thoroughfare of Ellenborough Street was moved to the west; some homes were resumed and some businesses were relocated. This was all to prepare for the new railway station which was never built.

Queensland Times 20 May 1880: John MACFARLANE M.L.A. advice to young miners, at a meeting at Tivoli, in connection with the Miners’ Accident Fund.

“Success in Life, and how to obtain it”

1. Keep good company; don’t fritter time away about the streets in idle and worthless talk of frivolity.
2. Make the best of your time, and don’t waste your spare hours, but spend them in a manner calculated to give edifying instruction and information.
3. Save your money – that is do not spend it foolishly nor be miserly. Money is a great power for good if properly used, and those who saved most had generally most to give to good and fitting objects.
4. Don’t wait too long before you get a wife. They might laugh but it was a fact that they should get a good helpmate to take care of themselves and their money, and none should wait much after they are twenty four. But if you do not have £50 in the bank, they should leave marriage alone. Better still it would be better that they had saved £150, and could take a wife to a home of their own.
5. Make up your mind to succeed in life, and do not be content to remain a mere workman all your life if you can do better.

QT 24th April 1941

Under the heading “**IPSWICH IMPROVES**”, the readers of the Queensland Times on the 24th April 1941 were told of the changes taking place in the city.

The work in progress included a **new police station**, the **new maternity ward**, **new quarters for hospital nurses**, and an **addition to the Technical College**, while several shops had new fronts added. The changes also extended to the awnings above the shops – “Ipswich is gradually losing those old, perhaps venerable, but certainly un-attractive relics of other days”

“In the city itself a steam-roller and grader are busy tearing up the section between Bell and East Streets preparatory to the laying of concrete, thus completing the section, from Nicholas-street down. The latest period of shop improvements began with the alteration and modernisation of windows in the store of **Bayards Ltd.**, Brisbane-street, and included an entirely new cafe in Bell-street, the **Ritz Cafe**, a remodelled **cafe** next to **Bayards Ltd.**, the **Regal Cafe**, a new shop front in Ellenborough-street, formerly a produce store, the transfer of Mr. J. P. **O'Dea's** tobacconist shop from Brisbane-street to Bell-street, and the alteration of Mr. **O'Dea's** former headquarters into a modern frock salon. Mr. **O'Dea** had carried on business in the little Brisbane-street shop for 35 years, and his move to more commodious rooms in Bell-street recalls memories of the disposition of this section of Ipswich business property. It passed from the hands of the late Dr. **Lightoller** to Messrs. Cribb and Foote, then became the property of the present Mayor (Ald. J. C. **Minnis**), and finally of **Preddey's Ltd.** Now the section comprising **Woolworths Ltd.** store and the old tobacco shop is leased to **Woolworths.**”



*The Ipswich Hospital
Maternity Ward 1961*

*Whitehead Collection
Picture Ipswich
WHD-016-NEG-1605p.jpg*

PRESIDENT'S REPORT –ANNUAL GENERAL MEETING 2023

Welcome to the 2023 AGM and I would like to present my 9th Report as President.

November was a sad month for the Genies, as we lost our Vice President of many years Claire **Juler** after her long battle with cancer. Claire passed away on the 12th November and a number of members attended her funeral. Claire was a valued member and a dear friend to many of us and is sadly missed.

One of the original members of the Society passed away in November 2022, but we did not know until the February 2023 magazine was returned to the Society. June **Walker** would have been 100 in June 2023 and was living at an Aged Care facility and because of a combination of COVID restrictions and privacy laws we had not heard of her passing. Perhaps if the local newspapers were still produced things would be different.

At the latter part of 2022 a valued member of our Society John **Rossiter** unfortunately suffered health issues, and was in hospital for some months before he moved to "Nowlanvil" Aged Care at Raceview. John has the greatest knowledge of the history of Ipswich and the early settlers who opened up the district, and although he is unable to move about freely, is always on hand to help with research queries. We miss his presence at Brigg House, and hope his health will improve. One of the rooms has now been named "John's Room" to acknowledge his dedication and his great contribution to the Society.

Changes were made in the microform room ("John's Room"), with the Courier Mail microfilm being packed away and the IGI replaced. As the newspapers are available on Trove, it was felt that if the IGI can be easily accessed, it would be of more benefit to researchers. The IGI can be viewed on Family Search on the internet, but some of the older members, prefer to use the microfiche. We would like to pass the Courier Mail microfilm on to another Society, but many have the same problem – lack of space. If any group would like them, they are free but would need to be picked up from Brigg House.

New shelves have been built to replace the tables in "John's Room" and we thank the partner of one of our members for his help. The extra room has made a big difference and gives more space for the microfilm and microfiche viewers. We appreciate Nick's help.

The Society had over 150 street maps of Queensland Towns, and we were able to pass them to Caloundra Family History Research, as we did not have the room to keep them. We are glad they have a new home.

The Society was asked to provide a speaker for the "Ipswich Friendly Group" in September at East Ipswich, and it was well received. There are a number of these Groups in the area, and their members meet at various locations for a cuppa and a chat and it is a way for many to have outside interaction. We also attended a meeting at the Racehorse Hotel and spoke to another group of ladies.

Because of my husband's on-going health issues, the monthly meetings have been held at our home since October. It has made it easier for me, and I appreciate the members making the move.

Our Christmas Get Together was held on the verandah of one of the Cooneana buildings, as it was a windy damp day and the covered area we were to

use was very cold. We all enjoyed catching up with other members and of course the delicious food.

This year the Genies combined with the Ipswich Historical Society and the Mini Crafters for a display at the Ipswich Show in May. The Mini Crafters set up a number of their 'Early Businesses of Ipswich', the Historical Society supplied artefacts pertaining to them and the Genies the information on the families associated with them. We can all be proud of the well -presented and well received display.

Our computers and everything to do with them, such as internet, networking updates etc are now under the care of Ipswich Tech Solutions, and is an on-going cost. There is no Grant to cover these costs, and we need to look for sponsors or fund raising in some way for this. The Executive is open to suggestions from members. We thank Greg Yarham the son of our Librarian for his support over the previous nine years, which is appreciated.

Our best news for the year was a successful application to Cleanaway for a Grant to purchase and install 2 new air conditioning units for Brigg House. We were ready for the very cold mornings we have experienced this year. Our thanks to Cleanaway for the Grant, the Good Guys for their support and the Ipswich City Council for permission to have the units installed.

The Annual Galvanized Festival has just been held with the numerous events enjoyed by Ipswich residents and visitors to the city and district. Congratulations to all those who worked so hard to make it a success.

Our membership has increased a little and we welcome the new and re-joining members. We appreciate those members who are helping with the indexing of scrapbooks and sorting the collections from members who are downsizing their homes as they get older. We welcome the help as it is amazing what has come to light.

We are finding ourselves short of volunteers for opening hours. We are all getting older, and many people these days, have grandchildren to care for, work, or other commitments and do not feel they have the time or the expertise to volunteer but we cannot expect the current volunteers to fill all the days. Please give some thought to volunteering for a few hours once a month. You are never alone; there is always an experienced member with you. It is a way to learn of the resources available, meet new friends and help your Society.

Thank you to our secretary Kathy **Boggan** as I would not manage without her help, and also to the Library Team for their on-going work updating the cemetery database, and the volunteers who are on hand to assist other members and visitors with research at Brigg House. These members are the backbone of the Society and I do appreciate the amount they do to keep us going.



Hopefully we will enjoy a peaceful year and all stay safe.

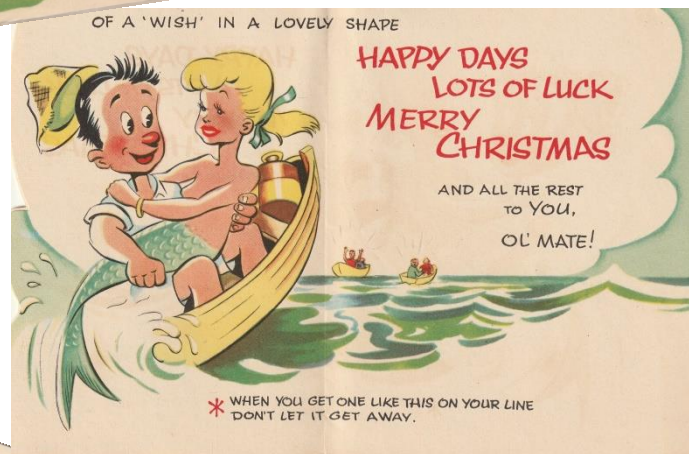
Best Wishes, *Irma Deas President.*
12 September 2023

CHRISTMAS CARDS

Two Christmas Cards from a few decades ago, now not accepted as politically correct. *Ed.*



Back & Front



Centre



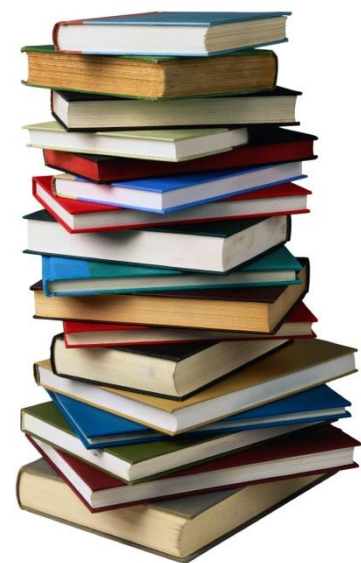
Back & Front



Centre

SOME OF THE BOOKS AT BRIGG HOUSE DONATED 2023

"Mine Host" Maryborough & District Publicans 1860 - 1924
19th Century Voyages to Queensland "Montmorency" 1985
A Capital Story - New Zealand's First Seat of Gov.
A Century of Golden Success - Monkland State School 1884-1984
Aust. Biographical & Genealogical Records 1842 - 1899 Vol 1
Australian Ghost Towns
Australian Women at War
Caboolture Country Caboolture Historical Society 1973
Cobar (NSW) Founding Fathers
Confidence & Tradition History of Esk Shire 1988
Descendants of Christian Meissner
Dickabram Bridge Centenary 1886 - 1986
From Spear & Musket 1879 - 1979; Caboolture "Durundur"
Gympie Gold - Hector Holthouse
Gympie Pioneer Register pre 1900
Hervey Bay - First 150 years 1863 - 2013
How to Trace Your Maryborough Ancestors
In the Shadow of the Glasshouse Mountains 1770 - 1998
Ipswich in the 20th Centenary 1904 - 2004
Ipswich Municipal Centenary 1960
Kybong Tandur Pioneer Park 1995
National Trust of QLD - Ipswich Townscape Sept. 1977
Our Karalee & Barellan Point 2015
Our McFarlane Clan -Family Reunion 7th August 1994
Pioneers of Taabinga Village & Kingaroy 1988
Qld Centenary - The First 100 years 1859 - 1959
Romance of the Bremer 1982
Stories of Stephens - History of Annerley & close suburbs 2016
Templin Germany - Templin Queensland
That Gallant Gentleman - Colonel Charles George Gray
The Palmwoods Story 1972
The Survival of Scotland - 1968
Through the Mary Valley Farms, Industries & Families
Timelines of Wentworth Shire 1788 - 2007
Wilderness to Wealth 1850 - 1950; Sth Burnett & Kilkivn Shires
Winds of Change 100 years Widgee Shire 1979



EARLY FOOTBALL IN IPSWICH

The first soccer game played in Ipswich took place on the North Ipswich Reserve on 26 June 1886. Ipswich became officially involved with the Association from 1887. In 1889, the Association changed its name to the Queensland British Football Association. In the 1890s the game was well promoted and popular in Queensland; Maryborough and Rockhampton also having strong association football teams. Intercolonial matches were staged and in 1914 Brisbane hosted the second annual conference of the Commonwealth Football Association.

A siding was built for a colliery in 1889 and when a station was opened there it was named St Helens (1909). In the following year it was changed to Ebbw Vale, and it became one of East Ipswich's important industrial localities. Britains Bricks and Pipes opened in Ebbw Vale in about 1880, remaining there until 1900 when it was moved to Darra. The Dinmore Pottery was opened in the 1880s on the site of the Ebbw Vale colliery, and in 1887 the Whitwood colliery, near the siding, and the Reliance Pottery in Cairns Road were opened. The pottery site has revealed a rich fossil field and complex geological remains. Much later (1911) the Ebbw Vale Brick Co north of the railway station was opened, diversifying into clay pipes and sanitary ware.

St Helen's merged with Coalstars Soccer Club in 1997 to form the Ipswich Knights. At the time it was agreed that the Coalstars' ground would be upgraded to QSF Premier League standards and the Ebbw Vale field used women's and junior matches. Some local families now have fourth generation members playing soccer on the field. While soccer has always been played at the ground, it has also provided a venue for cricket and for baseball, softball and touch football. Other clubs have also used the facilities. The field, being an accessible open space, has also been used for community gatherings at Christmas and on Australia Day. A community breakfast was held at the field for Anzac Day 2002.



*St Helens B Football Club
1926*

*Courtesy Picture Ipswich
qips-2010-03-31-0004*

*(The names of the men are
available on Picture Ipswich
website)*

THE HOUSE OF TRITTON

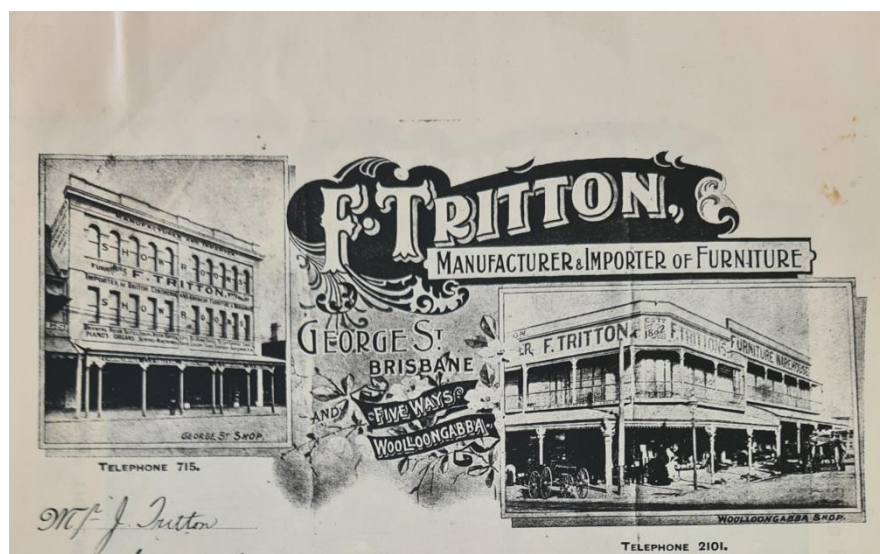
A well known name in Brisbane for furniture at one time was "Trittons". In 1884 William Tritton and his wife Sarah and four sons, Charles 20, Frederick 18, Joseph 16 and John 8, arrived on the "Sirsa" and the family began farming at Blunder, Oxley. William stayed on the farm, but Fred and Charles decided in 1886 to go into the second hand furniture business at Logan Road Woolloongabba. Fred had been a cabinet maker and upholsterer in England and it was not long before they were manufacturing new furniture. Both Fred and Charles married in 1889; Frederick William to Eliza Ellen Worrall 10.10.1889 and William Charles to Ellen Jones Atwell 18.09.1889. (Fred died 13.03.1947)

Charles left the business and by 1896 Fred had moved to larger premises in Stanley Street where more household items such as crockery and carpets etc were available for sale. In 1899 another move was made, this time to premises in George Street and Fred shared the space with two of his brothers, Joseph and John who had a hairdressing and fancy goods business.

The first illustrated catalogue was published in 1905 and "It Pays to Come to the Right Place" became part of their state wide newspaper advertising. Anything pianos to artificial flowers could be delivered anywhere in Queensland.

Trittons supplied furniture to the new Mater Hospital in 1906 and chairs to St John's Cathedral in 1910.

(I could not find the date that Trittons actually closed. Ed.)



MEMBER'S INTERESTS

A number of years ago we had a list of Members' Interests, and we are once more collecting names to share with other members and groups, with permission from the researcher.

Sharing is the best way to advance your research.

Please return your completed Member's Interest form, which has been emailed or posted to members, and if you wish they will be added to future editions of Bremer Echoes. In this way your research names will spread all over Australia, and as our magazine is online, can be read by anyone at all. The names below are entered by current members.

Kathryn Boggan – kboggan53@gmail.com

RAPPMUND Heinrich	Germany	1786 - 1834
OCHSENDORF Katherina Margarete	Lelm Saxony Ger.	1789 - 1863
CAHALANE Peter	Ireland (maybe Cork)	c1830's
HEGARTY Ellen	Ireland (maybe Cork)	c1830's
RYAN Mary	Tipperary	c1840's
DUNNE William	British Army India	c1830's
BOGGAN William	Ireland	c1800's
MARKEY Michael	Ireland	c1816

Julie Ivison - jivison2@bigpond.com

CAVANAGH / CAVENAGH Bernard	Ipswich & the towns of the Scenic Rim (Beaudesert, Boonah, Tamborine Mountain, Kooralbyn, Beechmont, Kalbar, Aratula, Canungra, Rathdowney, Harrisville and Peak Crossing)	1850 – 1950
-----------------------------	--	-------------

Diane Healy (nee Hall) – dianehealy49@gmail.com

McLAUGHLIN David	Ipswich & Rosevale	1854 - 1899
MURRAY Robert	Ipswich & Franklyn Vale	1855 - 1896
MURRAY James Davis	Franklyn Vale & Redbank Plains	1855 - 1921
TRONC Johann Heinrich	Mt Marrow & Marburg	1885 - 1900
TRONC Carl Friedrich (Charles Frederick)	Mt Marrow, & Marburg & Ipswich	1855 - 1959
ROOTS James William	Mt Marrow, Fernvale, Cloyna & Ipswich	1865 - 1926
VIERTEL Franz Ferdinand (Frank)	Brisbane & Marburg	1879 - 1923
HALL John Thomas	Ipswich & Mt Forbes	1863 - 1903
HALL James Martin	Mt Forbes & Willowbank (Amberley)	1871 – 1963

Esmae Mander - ej.mander@outlook.com

BUCKLEY George & DAVEY Emily Pine Mountain 1866 +
 MANDER/S Charles=MESSENGER Harriet Keogh St (frmly Ridge Lane)
 West Ips 1874 +
 MANDER/S issue of above
 GOWER George Alfred=COLVIN Mary Ann Rosewood 1800's +
 GOWER issue of above
 GOWER James Alfred=FERGUSON Annie Allan Darling St, West Ips.
 1900's +
 HOHNKE Wilhelm=1 FURSTENBERG 2 DAHM Marburg 1860's +
 HOHNKE issue of above
 BROWN Selina [nee Lovel/Lowel] Licensee, Post Office Hotel, Marburg
 1905 +
 BROWN issue of above
 BROWN William Martin=HOHNKE Ida Shelley St, Brassall 1918 +
 Issue of above
 TRELOUR John Harry=RUDDOCK Sarah Sth Station Rd, Silkstone 1870 +
 TRELOUR issue of above
 MORRIS William = PHILLIPS Matilda Rhondda Colliery Owner
 Cole St, Silkstone 1860+

Noela Wallace – noelafay49@gmail.com

WILKINSON Franklyn Vale, Deebing Creek, Ipswich, Pine Mt &
 Glamorgan Vale 1844 - 1845 +
 WHEELER Newtown, Ipswich 1859 +
 SMITH Harrisville & Ipswich 1859 +
 FARRELL Ipswich 1850 +
 BARKER Ipswich & Kurri Kurri NSW 1880 +
 H/AINSWORTH Dinmore, Ipswich 1880 +
 CALLOW Ipswich 1850 +
 BALCH Ipswich & Brisbane 1868 - 1871
 MUHLDOERFF Ipswich c1860 +

Gloria Tunstall - gvtunstall@hotmail.com

WATSON from Bradford YKS to Ipswich 1864 +
 HORNE Ipswich & Rosewood 1862 +
 COULSON from Landbeach CAM to Lanefield Rosewood 1877 +
 HARGEAVES from Bradfield YKS to Ipswich 1862 +
 MANTTAN Ipswich, Rosewood, Wondai & Brisbane 1862 +
 TUNSTALL Boonah & Ipswich 1884 +
 PHELPS Ipswich 1852 +

IPSWICH GENEALOGICAL SOCIETY - FINANCIAL STATEMENT 2022/23

Statements of Receipts and Payments to 30 June 2023

Balance as at 1 July 2022	\$ 16,027.10
---------------------------	---------------------

INCOME

Membership Fees	\$ 3,140.00
Research Fees	\$ 153.00
Door Money	\$ 161.00
Donations & Gifts (Cleanaway \$3800)	\$ 4,350.00
Printouts & Photocopying	\$ 57.15
Other Income	\$ 41.00
Raffles	\$ 130.00
Sundries	\$ 60.00
INCOME FOR FINANCIAL YEAR 2022/23	\$ 8,192.15

EXPENDITURE

Annual Costs	
Telstra account	\$ 1,326.22
Office of Fair Trading	\$ 58.60
Hist. of QLD membership	\$ 38.50
Contents Insurance	\$ 1,065.00
Find My Past Annual Fee	\$ 158.20
Ipswich Tech (fixing computers)	\$ 1,374.45
Good Guys air conditioners	\$ 3,796.00
Printer cartridges	\$ 232.00
Irma purchase	\$ 54.00
Committee expenses petty cash	\$ 106.50
Purchase of vacuum cleaner bags(cash)	\$ 36.00
Hard Drive purchase (3)	\$ 417.00
Signage cost for the J. Rossiter Room	\$ 71.70
Book Purchase Pine Mountain history	\$ 40.00
Library Equipment - storage boxes	\$ 54.00
Two mice purchases M. Reilly - Cash	\$ 38.00
Donation to ACRF (Clair's donation)	\$ 100.00
TOTAL EXPENDITURE 30 June 2023	\$ 8,966.17

LOSS	-\$ 774.02
-------------	-------------------

BALANCE SHEET

Retained earnings	
Balance 1 July 2022	\$ 16,027.10
Loss for the financial year	-\$ 774.02
Balance 30 June 2023	\$ 15,253.08

Assets

Bank	\$ 15,253.08
Float	\$ 85.00
Net assets	\$ 15,338.08

Eric Clarke
Treasurer 30 July 2023



PUBLICATIONS AVAILABLE

Contact the Secretary the address page 2

FROM RAIL TO WAR – QR Employees who enlisted in the Anglo Boer War 1899 – 1902 and the Great War 1914 – 1918 plus other information.
USB \$25.00 plus \$5.00 P&P [Australia]

PLACES OF WORSHIP – Ipswich & District Churches
Short history of churches in the area \$5.00 + \$2.50 P&P in Australia

INDEX TO IPSWICH CEMETERY BURIAL REGISTER 1847 – 2014
Over 36,000 records giving full name, age, death and burial dates where available 1 CD - \$20.00 + \$5.00 P&P

INDEX TO IPSWICH GENERAL CEMETERY 1851 - 1992 & Columbarium Wall 1949 - 1992. One microfiche \$6 includes postage in Australia. Over 15,000 entries with details of name, age and date of death.

BIRTH, DEATH & MARRIAGE EXTRACTS 1858 – 1865 from The North Australian & Ipswich General Advertiser. \$10 + \$10.00 P&P in Australia

CITIZENS OF IPSWICH - 1904 Names of Ipswich citizens in 1904 taken from Available Church Records - Baptisms, Deaths and Marriages, Electoral Rolls, Post Office Directory, Available School Rolls, Queensland Times Reports. \$10 + \$10.00 P&P in Australia

IPSWICH & DISTRICT PIONEER REGISTER - pre 1914; Pioneer Families of the Ipswich, Gatton, Laidley, Boonah and Esk areas of Queensland.
Please note prices: Set Volumes 1 & 2 - \$10 + \$18 P&P in Australia

JUBILEE HISTORY OF IPSWICH 1910 Commemorates the Jubilee of Municipal Government. Reproduced on CD from the original 157 page book \$19.50 (\$6.00 P&P)

Copyright: Kindred Societies may reprint information from this magazine (unless marked copyright) provided full acknowledgement of “Bremer Echoes” as a source is given.

MANAGEMENT COMMITTEE 2023 - 2024

Patron	Ipswich Mayor Teresa HARDING
President	Irma DEAS 3282.3067
Vice President	Barry AINSLIE secretary@igs.org.au
General Secretary	Kathryn BOGGAN secretary@igs.org.au
Treasurer	Eric CLARKE 3201.4192
Assistant Treasurer	Sally HETHERINGTON secretary@igs.org.au
Librarian	Angela YARHAM 0431977269
Magazine Editor	Irma DEAS 3282.3067 secretary@igs.org.au
Committee Members	Chris LLOYD 3143 9006 Michael O'REILLY 0432051440 Sally HETHERINGTON secretary@igs.org.au
Research Officer	Michael O'REILLY 0432051440
Library Team	Angela, Ashleigh, Michael, Sally
Scrapbook Compiler BD&M and General News	Judy-Ann SMITH 3202.3597



Supported by Blue dog Training

The Ipswich Genealogical Society Inc. does not accept responsibility for opinions expressed in this magazine.

PRINTED by Hon Shayne Neumann MP Federal Member for Blair,
The Ipswich Genealogical Society would like to thank Federal Member for Blair, Hon. Shayne Neumann and his Ipswich Electorate Office staff who have kindly printed “Bremer Echoes”