

BREMER ECHOES

OUR FOREBEARS PAST, YET PRESENT STILL



IPSWICH GENEALOGICAL SOCIETY INC

VOLUME 36 NO 3

NOVEMBER 2018

RESEARCH ROOMS & LIBRARY

“Brigg House”

Cooneana Heritage Centre
1041 Redbank Plains Road,
New Chum, Ipswich 4303

Please address all correspondence to:

The Secretary, P.O. Box 323, IPSWICH Q. 4305

Phone: 07 3282 6454

Or email: secretary@igs.org.au

Website: <http://www.igs.org.au>

MONTHLY MEETING: SECOND Tuesday of the month at 9.30am
[except January]

Ipswich City Council Division 4 Community Meeting Room
Station Rd. Booval
Friendly Care Chemist Building

Dues are payable by 30th September.

Subscriptions Single Membership \$40

Family 2 members residing at the same address \$55

Journal only subscription [Posted or mailed] \$10

Visitors welcome at Research Library per day \$20; ½ day \$10;

Research undertaken by post – Initial Research Fee \$30

Additional Research fees charged at rate of \$25 per hour or part thereof.

Annual Membership includes Society's magazine Bremer Echoes

February, July, & November, posted or emailed.

Out of town members entitled to research on their behalf from Society records.

OPENING HOURS

Monday & Thursday 9.30am to 2.30pm

Saturday 9am to 12 noon – Closed Sunday

Closed all Public Holidays

Cover Photograph:

One of the marble fireplaces imported by Lewis Thomas, for “Brynhyfryd,” his ‘castle’ at Blackstone Ipswich in the early 1890’s.

Courtesy Picture Ipswich

BREMER ECHOES

ISSN 2208 – 2131

Volume 36 No 3

November 2018

The Journal of the IPSWICH GENEALOGICAL SOCIETY INC

The First Genealogical Society in Queensland 1977



Page 5

President's Report 2018

Page 7

Streets of Ipswich 1918 - *conclusion*

Page 11

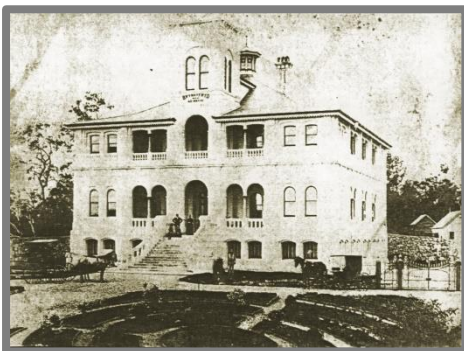
Ipswich Fire Brigade *Part 2*

Page 15

Historic Motorcycle Q Ipswich Branch

Page 16

Ipswich Land Selection 1872



"Brynhyfryd" Blackstone: Late 1890's
Courtesy Picture Ipswich

New Members: *We welcome the following new members and hope they find those elusive ancestors, good luck!*

Joshua Campbell; Jill McCartney; Rosemary Smith; Susanne Grice; Bryan Marsden; Sally Hetherington; Glenda Oostenbroek;

PLEASE NOTE:

"BRIGG House" *will close for the Christmas Break on Saturday 15th December 2018 and will re-open on Monday 7th January 2019.*

A Few Words from the Editor:

The Annual General Meeting was held on Tuesday 11th September and we welcomed our Patron Kylie Stoneman, and also Sally Hetherington, who up until her retirement recently, was the Archivist for the Ipswich City Library. It was a pleasure to welcome these two ladies who have both worked so hard for the community. Members enjoyed the refreshments after the meeting and spending time with our visitors.

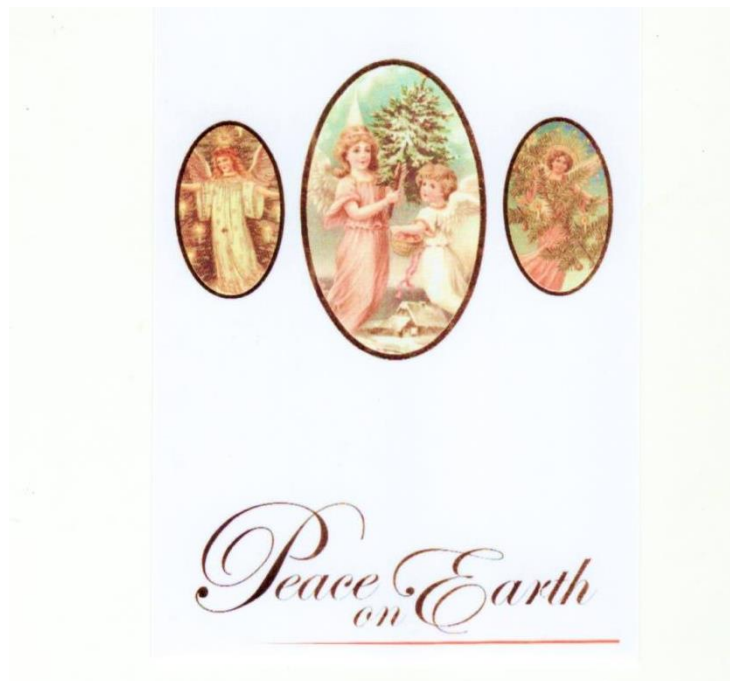
Kathy Boggan who stood in for our secretary Beth Forsyth who is not well, has joined the Committee in her place. Welcome Kathy. We thank Beth for her assistance over the years, and hope she will be back with us soon.

Reports from the AGM are included in this magazine.

The electricity upgrade is progressing, and we now have lights and fans. Have you noticed the Society has a new web site? It has the same domain name, so nothing new there. The Committee thought it was time for a change - please let us know what you think.

The last 'Walk around the Ipswich Business District 1918', which has been of interest to many, and Part 2 of the Ipswich Fire Brigade story – with thanks to Brian Jeffrey - begin on pages 7 and 11.

Irma



To members & friends of the "Genies"

Best Wishes for a Safe and Happy Christmas

May the New Year bring Good Health & Happiness;

President Irma Deas Vice President Claire Juler

Secretary Kathy Boggan Treasurer Eric Clarke

**IPSWICH GENEALOGICAL SOCIETY PRESIDENT'S REPORT
A.G.M. 14TH SEPTEMBER 2018**

Welcome and thank you for your attendance. I would like to present my Presidents Report for 2018.

Over the last 12 months there have been many changes to Brigg House, and we now have a very nice home for the Genies. Challenge Employment and Training began the project to upgrade the exterior of Brigg House and in the process enabled Trainees to obtain their Cert 1 in Construction. It was a long process, with a number of detours along the road.

The decision to remove the chamfers and replace with new ones, proved to be the right one. Many of the old boards were rotten and there was lead based paint present. The replacement of the gutters was done by tradesmen because of the height issue. We hope the trainees obtained their certificates and will be on the road to a bright future. This project was made possible by a Community Benefit Fund Grant from Cleanaway, for which we are truly grateful.

The changes to the back room from toilet and shower to our scrapbook shelves have given us more room and light and a cosy place to sit in winter. Fortunately John Mander kindly donated and laid the carpet tiles and we thank him sincerely.

A friend of one of our members kindly donated to the Society a set of plans of the streets of Ipswich drawn in 1918, showing the buildings and the occupants and we have had them laminated, and they are on the walls in the microfiche room. It is fascinating to see the changes which have occurred in the 100 years since they were drawn, and amazing how many of the buildings still stand.

A new server was purchased, and the computer in the filing cabinet room is set up for the older CD's and is not connected to the internet, and is research only.

The sanding and coating of the ramp and deck, has really added the final touch to the exterior of Brigg House.

The Hospital Museum honoured the Ipswich nurses from The Great War 1914 – 1918 with a Plaque which was unveiled in November, and Society members were invited to attend. A fitting tribute to those dedicated ladies.

It was decided that instead of a Christmas Raffle, members would donate to the Wesley Mission Red Bag Appeal, which is a very worthy cause helping those less fortunate in the community. This was done through our Patron and Councillor at the time Kylie Stoneman, and we were happy to do our bit.

To promote the Society at events and displays, a new banner was purchased. We thank Peter Wyman at Big Hit Team for the art work and our Patron Councillor Kylie Stoneman for the Community Donation to cover the cost. Our big banner does stand out, and makes the Society more visible.

The Society has been represented at a number of events during the year. I was invited to speak to Probus members at North Ipswich on Monday 11th December 2017, and members joined many other volunteer groups at the Ipswich City Council sponsored Volunteers Breakfast on Tuesday 12th December.

As a part of the Ipswich Festival in April, we held Information Days from which we gained a number of new members. A delightful day was spent at the Welsh Church, at their Open Day. This is the only Welsh Church in Queensland and has been there since the late 1800's.

The Gathering of the Clans each year in June, in Limestone Park is always a great day when Scottish Bands from all over Queensland and Northern New South Wales gather for the Pipe Band Championships. The weather this year was perfect and it was an enjoyable day.

Two of our members Edith Henry and Angela Yarham represented the Society at the History Queensland six monthly Meeting at "Bankfoot House" Glasshouse Mountains in

November 2017, and Edith and I travelled to Warwick to the History Queensland AGM on the 20th May 2018 at the historic Criterion Hotel. It is good to meet up with members of other Societies, and to learn what is happening around Queensland in the world of Family History.

Our list of cemeteries, and records of burials, and photographs of grave stones is growing as the dedicated group is hard at work collecting and recording the information. Copies of obituaries, wedding reports, birth, death and marriage certificates form a big part of our resources and are worth checking as a lot of information may be found in these files. The index to each is on the computers.

Edith Henry and Noela Siddens have set up a photographic display which they will change from time to time, as we have a large collection of photographs, many without identification. Please check them as you may be able to help with identification.

Welcome to the new members and hopefully they will break down the brick walls in their research and find all those ancestors who are probably looking down smiling at our efforts to find them

I would like to thank the dedicated group who have worked tirelessly throughout the year as Library Assistants and behind the scenes. Thank you to Beth Forsyth who was our secretary, but unfortunately is not well and has had to step down from the position. We wish her well and hope that she will be back with us in the future.

Thank you to Kathy Boggan who has kindly stepped into the position - Kathy your help is appreciated, and also to Claire and Eric who are always there and willing to help at any time.

I look at Brigg House as it is now, and think of the changes we have made in two years, and the installation of lights and fans has just been completed, as we were successful with a Community Benefit Grant from Cleanaway, which will enable us to be connected to the new power board which will soon be installed on site. We have had power points since we moved in to Brigg House, but no overhead electricity. Member Michael O'Reilly kindly arranged plug in lights in each room, so it has not been a problem. Fans will add to our comfort in summer and in the future air-conditioning will be installed.

We look forward to a successful and productive future with hopefully many new faces.
Irma Deas, President

JUST A FEW THOUGHTS

From the internet

The fact that there is a "Highway to Hell" and just a "Stairway to Heaven" says a lot about anticipated numbers.

So when is "old enough to know better" supposed to kick in?

Don't confuse my personality with my attitude – My personality is who I am – my attitude depends on who you are.

You know that little thing inside your head that keeps you from saying things you shouldn't? Well I don't have one of those.

My people's skills are just fine – it's my tolerance of idiots that needs work.

I never argue – I just explain why I am right.

I speak my mind because it hurts to bite my tongue all the time.

I'm only responsible for what I say – not for what you understand.

When you're dead you don't know you're dead. It's the same if you are stupid.

Be careful when you follow the masses – sometime the "m" is silent.

I'm not lazy – I just enjoy doing nothing.

I prefer not to think before speaking – I like being just as surprised as everyone else by what comes out of my mouth.

IPSWICH CBD 1918

The first in the series of ‘Ipswich CBD 1918’ and a walk around Ipswich streets appeared in the November 2017 Bremer Echoes. This is the last of the walks, and I hope it has been of interest. It is fascinating to view the maps and read the story.

Survey maps of the Central Business District of Ipswich produced in 1918, provide a valuable resource for the family history researcher, and those researching local history. Over time there have been changes in some of the streets, for instance Nicholas Street turned onto the town bridge until the David Trumpy Bridge in East Street was opened in 1965.

Kern Corporation changed the face of Ipswich with the development of the Ipswich City Square in the late 1980’s, closing Nicholas Street from the river to Brisbane Street. At present the area is being re-developed.

Local business man Wayne Wallace has donated a set of the maps to the Society, showing the Ipswich CBD in 1918, and these are now hanging on the walls at Brigg House for members and visitors to study. Thank you to Wayne for his generous donation.

Come back to 1918 and we will walk around the streets of Ipswich to see what we can find.

STREETS OF IPSWICH 1918 {Continued}

Today we will begin at the corner of Brisbane and Ellenborough Streets, and cover two blocks and end our tour at the corner of Brisbane and Nicholas Streets. In our walks we have covered the main business of Ipswich as it was in 1918, just 100 years ago.



Queensland Times Building on the left – late 1800s; Courtesy Edith Henry

On the corner of Brisbane and Ellenborough Streets is the imposing **Queensland Times Newspapers** building, with the **Queensland Government Labour Exchange** at the front. This building has two levels and covers a big area of Ellenborough Street. There is a Pulling Lift to shift the rolls of paper to the printing presses, but it is not being used today, so we cannot watch. **Mr Bem** the **printer** has a small shop attached on the western side.

We can see **St Pauls Church of England** on the other side of Ellenborough Street, a different view of the church we had seen from Brisbane Street on another of our adventures.

There is a laneway beside **Mr Bemi's** shop, and on the other side, is the block owned by the **Methodist Church**. The Pastor's dwelling has a verandah across the front, and a wash house and bath room at the back and a fernery on the side fence. Steps lead up from the road to both the Manse and the church which is the oldest Methodist Church in Queensland.

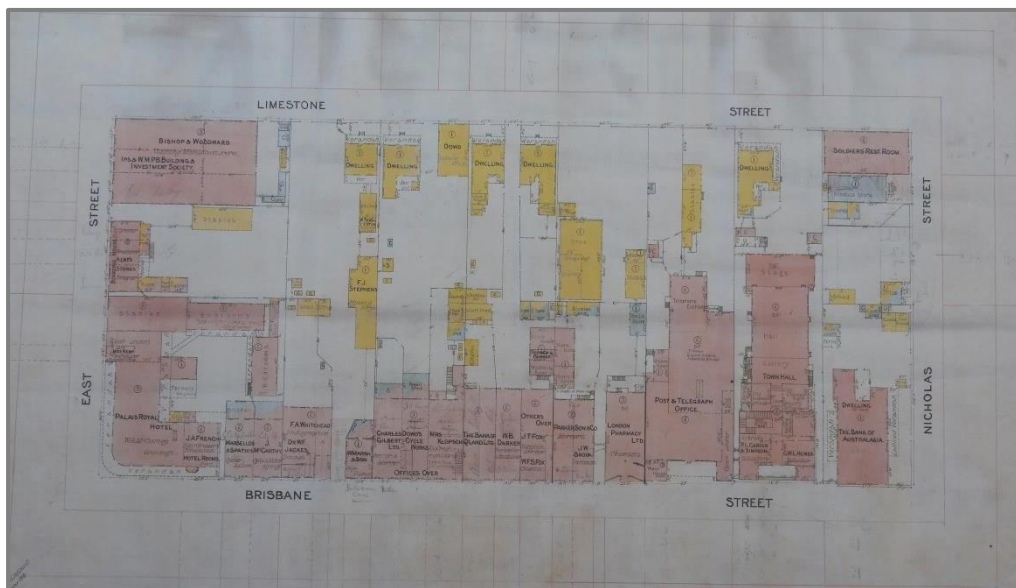
[From "A 150 year Heritage of Witness and Service The Ipswich Uniting Church" - A brick chapel was built in 1858 by Samuel Shenton, facing Ellenborough Street, and extended to the east in 1863 to a design by Benjamin Backhouse. In 1892 the addition of north and south transept and a vestry were designed by Henry Wyman and built by Perry & Betts. The Church was renovated in 1923 to celebrate the 75th Anniversary with the removal of the shingle roof (replaced by iron), and the next year a side porch was added.

The pipe organ was installed in 1905 and was rebuilt in later years. The Sunday School building was erected in 1897, and remodelled in 1938 and 1967.]

We walk around the corner into Limestone Street and admire the **Church** and the **Sunday School** buildings, and notice there are stables in the back corner. The Pastor must still use a horse – does he have a sulky, or does he ride I wonder? We do not walk any further past the Sunday School, as the dwellings facing Limestone Street, we had seen from the back as we walked along Brisbane Street.

The lovely old **St Pauls Church of England** occupies the block in the centre of Ipswich enclosed by Brisbane, Ellenborough, Limestone and Nicholas Streets, and today we will walk down Limestone Street and up Nicholas Street to the front of the church, passing the beautiful Manse with its well-tended gardens, and pause to look at the imposing entrance and carriage way leading to the door of the church.

We walk across Nicholas Street and decide to walk down Brisbane Street and we pass the **Bank of Australasia** which has a verandah on each side, and the Nicholas Street one is enclosed with lattice. I suppose it is for privacy as the bank manager has his home in the same building. Their bird house is rather large so I think they must have big birds, and in the back yard we can see a fowl house, stables, a cart shed, wash house and fernery – all neat and tidy.



The map, or plan maybe more appropriate, showing the Nicholas, Brisbane, East and Limestone Streets block.

At the front of the **Town Hall** next door, the solicitors **C.W. L Heiner** and **P.L. Cardew & Simpson** both have offices, and there appears to be stairs leading down to a “well hole”. Aunt tells us the **City Inspector’s** office is on the ground floor with the **Town Clerk** in the office above. The **Mayor’s Office** is above the **City Engineers**, and in the main hall there is a gallery at the Brisbane Street end and a stage at the other. Stairs lead down from the top floor on each side of the building.

The **Post & Telegraph Office** is next door, with a Clock Tower at the front, and the telephone exchange at the back. We walk inside and there are people at the counters waiting to be served - it is rather busy. The Office is prepared in case there is a fire, as in the centre of the room there are three hoses, 6 sand buckets and an asbestos blanket. Hope they are never needed.

London Pharmacy is a narrow building with a lane down the side and we see there is a bottle store at the back, and Aunt tells us they dispense their medicines themselves, and the bottles are reused. On the other side of the lane, we see **J.W. Brook** the **optician** and **Parker Son & Co** the **merciers**, and at the back there are two storerooms, and stables. They have stairs leading down from the building at the back. *[This building later became the National Bank].*

Another **chemist W.F.S. Fox** and **J.T. Fox** the **Surgeon Dentist** are on the ground floor of the next shop, with rooms above. Out the back there are a number of store rooms and the **solicitor Pender & Pender** uses one of them. There is also a mechanics room – we wonder what that means.

We pass **Mr W.B. Darker** who is a **bookseller** and **stationer** and his is a very small shop *[Later Jackson & Meyer the auctioneers].*

The **Bank of Queensland** is not very big, and has stables and a cart shed behind it so perhaps the Manager drives a buggy. I wonder!

I love this next shop, and we often have a treat at the **Refreshment Rooms** of **Mrs Klopsch**. There are stairs leading from her back door down to the yard where there are stables, a feed room and cart shed. We do not stop today, but perhaps Mother and Father will bring us on our next visit to town.

Mr Dowd has his **Cycle Works** with a repair shed at the back, *[Later Halls Chemist]* and then **Charles Gilbert Ltd** the **Tailor and Mercer** *[Later Evans Electrical]* with **W. Marsh & Son** the **City Florist** the last shop in the large building. *[This was to become Belladonna Ladies Hairdresser in later years.]*

Beside the Refreshments Rooms we had noticed stairs going up, and we are told there are offices on the floor above these last few shops. I wonder who works there.

A lane way leads to the back of the building and we find that **F.J. Stephens** has a **Shoeing Forge** and he uses the coal from his shed to heat the forge. There are two horses waiting patiently for **Mr Stephens**.

The **boot repairer, Mr W. Travertin** has his workroom with a kitchen attached and a covered walkway which goes to his house which has a verandah at the front and faces Limestone Street. The lane comes out on Limestone Street, giving access from one street to the other.

The well-known **photographer Mr F.A. Whitehead** who has been in business since the early 1880’s has his upstairs studio on the other side of the lane. On the ground floor is **Dr W.F. Jackes** the **dentist**. *[Some years later Walkers Jewellers occupied a small shop at the front of this building.]*

Mr J. McCarthy who has a **cycle and motor agency** is next door with the **Oyster Saloon** of **Marsellos & Spathis** adjoining. There is a kitchen attached to this shop. *[These two shops later became the City Café and City Cash & Carry].*

A very narrow lane separates the **Oyster Saloon** from the **Hairdresser** and **Tobacconist J.A. French** who has his shop under the first floor rooms of the large **Palais Royal Hotel** owned by **W.R. McCamey**. The hotel which has a slate roof covers a large area from the lane, around the East Street corner and half the block to Limestone Street.

The hotel has verandahs on the first floor, on both the Brisbane and East Street sides and also at the back of the building and on the two blocks of bedrooms at the back. A large fernery on the ground floor is close to the office. **Stables** have access to East Street and **Mrs Kemp** has a small **confectionery** shop and **Registry Office** on ground level.

The next shops we pass are the **Kemp Stores** – a **Draper, Fruiterer** and a **Grocer**, and there is a **Boarding House** on the floor above, but there is nothing to tell us the name of the proprietor. Perhaps it is **Mr Kemp**. Attached at the back is a kitchen and bathroom with stables near the side fence.

The building on the corner of East and Limestone Streets is the **Ipswich and West Moreton Building Investment Society** on the ground floor and **Bishop & Woodward Clothing Manufacturers** on the first floor. This is a very imposing brick building with large glass windows. *[In 2018 the windows on the upper floor are still the original ones from when it was built in 1888].* At the rear of the allotment are two **Pattern Sheds**. I wonder what would be in them.

We have begun the walk back up Limestone Street and it appears to be only dwelling houses from here to Nicholas Street. We first walk past the lane which we saw from Brisbane Street and once more we can see the businesses of **Mr F.J. Stephens** and **Mr Travertin**. Perhaps **Mr Dowd** lives in the next house, as his **Repair shop** is on the same street frontage.

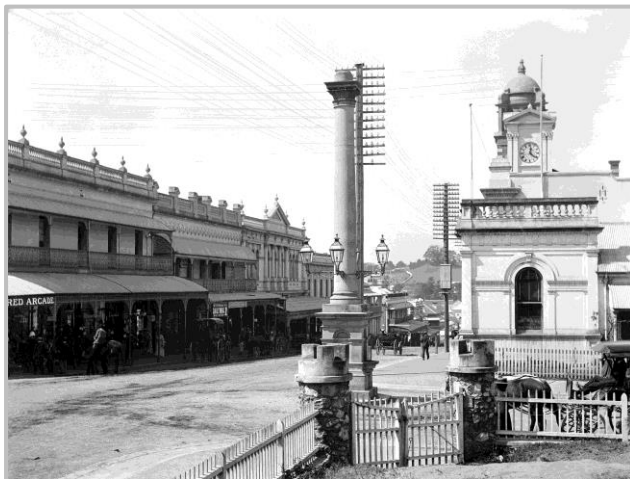
The two houses we pass are much the same, with a verandah across the front and a wash house attached at the back. From here we can see the back of the shops we had passed in Brisbane Street – the Chemist **Mr Fox** and **Mr Darker** the book seller.

There is only a large shed with a shingle roof and stables behind the **London Pharmacy** and **Parker Son & Co** the mercers, and the lane which leads to Brisbane Street.

We are now at the back of the **Post and Telegraph Office** with stables near the fence. A dwelling with verandahs across the front and down one side and a wash house attached is on the next block which is behind the Town Hall.

On the corner of Limestone and Nicholas is the **Soldiers Rest Room** and as we turn into Nicholas Street we see the loading platform at the front of the **Produce Store**, which has stables attached, and an office and shed in the same yard. It is very quiet today with only one horse and dray at the platform.

We are back to where we started today at the **Bank of Australasia**, and have enjoyed our walking tour of the main streets of Ipswich. It will be interesting to see how it changes in the future.



[1902] Brisbane Street & Nicholas Street corner Ipswich taken from St Paul's Church of England showing the Church Gates, the Blackall Monument, the Bank of Australasia, and the Town Hall which had a clock at that time. The Post Office Tower also contained a clock. [Courtesy Picture Ipswich]

A FIRE BRIGADE FOR IPSWICH

Continued - Part 2

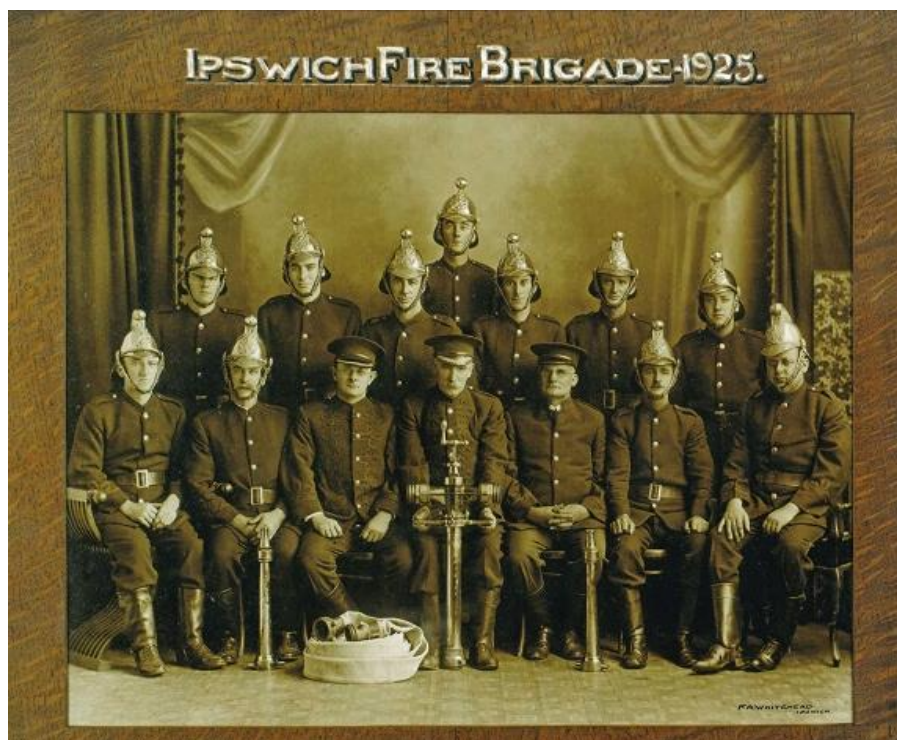
Brian Jeffrey

After some consideration, in 1910 an “auto-wagon” was purchased from the Brisbane showrooms of the International Harvester Company of America. It had solid rubber tyres and was capable of carrying four to six firemen and drawing a “reel” at between 2 and 25 miles per hour (3 to 40 kms). Within three years, however, there were complaints that it had a problem going up hills. Its replacement, a Republican Fire Truck, was on hand when a fire broke out in 1914 at the retail store of Cribb & Foote, which had its own fire brigade. Together, the two brigades managed to extinguish the flames using water stored on the roof, but not before a young employee was crushed by a massive fire-proof door which came off its rollers.

In 1921, a Dennis patent turbine fire engine was imported from London to supplement the Republican truck. It was capable of pumping up to 40,000 gallons (about 182,000 litres) of water per hour.

Establishment of the Northern Suburbs Volunteer Fire Brigade

The Tivoli Hill and North Ipswich Progress Association in 1924 proposed the establishment of a Tivoli Hill Volunteer Fire Brigade and sought the support of the Ipswich Fire Brigade Board. During a residents’ meeting on 16 August, it was proposed that a volunteer fire brigade be formed ‘in the vicinity of Tivoli’. The Ipswich Fire Brigade Board promised to supply the brigade with a hand reel and 400 feet (about 122 metres) of hose, provided suitable arrangements could be made to house the equipment. Coincidentally, earlier that month my grandfather, Robert **Jeffrey**, had moved his family from their then home on Tivoli Hill to a larger residence at 113 Downs Street, North Ipswich. During the residents’ meeting, he agreed to house the equipment there. The meeting also resolved to call the new organization the Northern Suburbs Volunteer Fire Brigade and appointed delegates to liaise further with the Ipswich Fire Brigade Board.



Back Row: R.C. Doherty, R. McKelvie, A. Barnes, A. Young, A. Morgan, W.R. Cafferky, Front Row: J. Tunstall, R. Jeffrey, I. C. Broad [Deputy Chief Officer], W.G. Cafferky [Chief Officer], V. Gritton, F. Turner, R. Gritton.

State Library of
Qld Image 11574 -
Courtesy Brian Jeffrey

A special meeting of the Board in late August resolved to grant the new brigade registration in accordance with the provisions of the Fire Brigade Act of 1920 on condition that it consist of ten men including a foreman and deputy-foreman. The Board secretary was instructed to write to the new brigade and request all interested men's names, ages and addresses and any particular qualifications each applicant might possess. At a further special meeting on 4 September 1924, the Board chose Robert **Jeffrey**, his 17-year-old son Walter **Jeffrey**, (my father) and eight other men, **A. Sterling**, **W. Bowles**, **A. H. Savage**, **A. Clarke**, **A. Middleton**, **R. Evans**, **G. Crisp** and **J. Casey**, from among 20 applicants. Robert, who was already a full-time member of the Ipswich Fire Brigade, was appointed Chief Officer of the Northern Suburbs volunteers. The Board also resolved that the new brigade should have the use of a spare fire bell. By late January 1925 the brigade had also taken possession of its hand-reel and appliances.

The new brigade held its first fortnightly practice with dry hoses on 2 February 1925, during which it cleaned and maintained the fire plugs in Pine, Hopetown, Wyndham and Downs Streets and Tivoli Road. *The Queensland Times* reported that Chief Officer Jeffrey had 'expressed himself very pleased with this the first turnout of the brigade'. The fire bell was reported to be in position and the Chief Officer was waiting for the telephone to connect him to the Ipswich head fire station. Walter **Jeffrey**, later recalled, 'We had a fire reel stationed under our home at 113 Downs Street, and a fire bell on a high pole in the back yard. We used to go out practicing..., but we were not allowed to turn the water on.'

While the town brigade had had motorized transport since 1910, the North Ipswich brigade's equipment was much more basic. Walter's younger brother, Bob, would later recall: 'They had a cart with reels on, and it had shafts, and there'd be a couple [of firemen] in the front and a couple in the back and away they'd go. They'd run with it. And they'd beat the town brigade to the fire. They were all volunteers who lived round-about. They had a hose on the reel on the cart and they'd draw the water from the main when they got to the fire... Dad was in the brigade but the others weren't in the brigade...' He recalled that whenever a fire necessitated the brigade's presence, it was his job to ring the fire bell. 'When I went to run after [the brigade] to catch the fire, Dad used to send me back. "You ring that bell", he'd say.'

During February the Northern Suburbs Volunteer Fire Brigade management committee forwarded to the Board a copy of rules it had adopted, quite possibly as a result of its early 'business meetings'. The Board was quick to respond that it would not recognize the proposed 'rules', reiterating that the new brigade must work under the Board's supervision according to *its* registered rules and in accordance with the Act. What might be seen as a misunderstanding arising out of misguided enthusiasm on the part of the new brigade would prove to be a precursor to an uneasy relationship and rivalry between the Board and the management committee of its new northern suburbs outpost, sometimes bordering on mutual disdain.

By March 1925 the Northern Suburbs Volunteer Fire Brigade had settled into a routine of fortnightly practice under Robert **Jeffrey's** supervision. For the first time, 'wet hose practice' was undertaken and three fire plugs were given a routine check. According to *The Queensland Times*, Robert expressed himself pleased with the standard of the brigade's work and said he was now ready for any fire that might ensue. The local community was also supportive, including with a benefit screening and vaudeville performances at the Rialto Theatre in North Ipswich on 25 March.

In mid-April, the brigade held its evening practice session in Smith Street. Robert **Jeffrey** instructed the 'younger members' in throwing out hoses from the reel in readiness for turning on the water, running out dry hose preparatory to attaching it to the hydrant, and rolling up the hoses. *The Queensland Times* noted that the brigade was hoping the telephone

would be installed in Robert's residence in the near future as it would be invaluable in case of fire. Some months later the newspaper also reported that the brigade was trying to raise funds towards 'a convenience to transport the reel more expeditiously to a fire'. Towards this end, 'shilling evening' fundraisers were held at Robert's home in Downs Street during September and December 1925. Entertainment included songs, dancing, games and, during the December function, the drawing of an art union.

Notwithstanding such enthusiasm, it would seem that the Ipswich Fire Brigade Board was keen to keep the Northern Suburbs Volunteer Fire Brigade at arm's length. When, in January 1926, it received a letter asking that Robert and two other members be allowed to attend the next Board meeting, the response was that the brigade should put the business they wished to discuss in a letter and it would receive due consideration. At best, the response suggests a degree of patronage if not tension between the Board and the Northern Suburbs Volunteer Fire Brigade. Worse was to come. In June 1926 the Board's regular monthly meeting was advised that a letter had been received from the secretary of the Northern Suburbs Volunteer Fire Brigade stating that that body had unanimously decided to disband. The letter included the cryptic comment, 'It is needless to say that there are causes which necessitated this action'. The meeting was told that a further letter had been received in which the volunteer brigade advised that it had been decided to share equally between the Ipswich Hospital and the Ipswich Ambulance Brigade the amount standing to the brigade's credit, a total of £45/12/4 (\$91.25). The letter sought the Board's approval. The Board resolved to inform the brigade that the letters were 'being considered'.

At the Board's September meeting, the Chairman reported that he and the Secretary had visited the Under-Secretary of the Home Department concerning the disbursement of the finances. The Under-Secretary had opined that the money should be held in trust in case a fire brigade was formed in the same locality at some future date; however he did not believe that exception would be taken to the money being distributed in the manner proposed by the Northern Suburbs Volunteer Fire Brigade and undertook to place his decision in writing.

Unfortunately, the minutes of the Ipswich Fire Brigade Board appear to be no longer in existence and the cryptic reference to the issues behind the volunteers' decision remain unexplained. The fact that Robert **Jeffrey** remained a member of the permanent brigade and appeared to be on good terms with Chief Officer W. G. **Cafferky** suggests that the disbandment was not instigated by him but rather by the volunteers under his command. Possibly there was resentment that, despite their demonstrated dedication to the task at hand, they were left to support themselves through 'shilling evening' fundraisers and expected to make do with an antiquated hand reel while the professional Ipswich Fire Brigade which they supported had the use of two motor driven vehicles.

Whatever the grievances perhaps they could have been addressed to everyone's satisfaction, had the attempt by Robert and two volunteers to attend the February Board meeting, not been rebuffed in such an apparently imperious manner. As it were, the volunteers' abrupt and unanimous decision appears to have left a lasting acrimony, evidenced by the Board's failure to re-establish the Northern Suburbs brigade despite an apparent inclination to do so.

In spite of everything, it appears that Robert **Jeffrey's** house in Downs Street continued to serve as an outpost of the city brigade and a rallying point for volunteers. Around the same time that the Northern Suburbs Volunteer Fire Brigade disbanded, the Fire Brigade Board finally arranged for the installation of a telephone line from the brigade station to Robert's residence. His son, Bob **Jeffrey**, recalled, 'they used to ring our place every night to test the telephone which they'd put on to the house for us.' Another innovation around this time was the installation of 24 patent street fire alarms in various parts of the city. On Christmas Eve 1926 the Board had also announced that volunteer members of the brigade

would be given a 2/6 increase in their allowance for attending fires, bringing their payment to 12/6.

By 1935 eight of the Ipswich Fire Brigade's 14 members had served for periods of a decade or longer. In a ceremony to mark the occasion, the Chairman of the Board of Management presented three firemen, A. **Morgan**, R. **Rose** and R.P. **Cuthbert**, with medals to mark service of 10, 11 and 12 years respectively. Firemen W. R. **Cafferky** and A. **Young** each received one bar for 15 years' service, while Deputy Chief Officer R. C. **Doherty** and Robert **Jeffrey** each received their second bar for 30 years' service. Chief Officer W. G. **Cafferky** received an additional two bars in recognition of his 44 years association with the Brigade, taking his tally of bars to seven – more than would fit on his medal ribbon.

NOTE :

As far back as the 1860s, Down Street, North Ipswich was presented thus (without the s). The present-day official name is Downs Street. For consistency, I have used Downs throughout this history. Brian.

LADIES CRICKET MATCH

The following article appeared in the Queensland Times 23 December 1922, and shows that even in 1922 ladies played cricket. The men from the Queensland Times had a handicap, which added to the fun on the day. Editor

"QUEENSLAND TIMES" v. REDBANK PLAINS LADIES



Played at the Plains (a return match), near the residence of "Mr. Lewis **Jones** on December 18. The match was won by the Ladies, comprising Misses Dell **Kerwin** (captain), Bina **Carroll**, Cis **Kerwin**, M.McMahon E. **Pitt**, L. **Kelly**, L. **Bowden**, S. **Johnson**, G. **Brushe**, and T. **Kelly**, and Mrs. E. **Bowden**. Respective totals- Ladies, first innings, 41 (Miss **McMahon** top scoring with 11); second innings 71 (Miss L. **Kelly** 10). "Queensland Times," first innings, 53 R. **Barker** 23); second innings 27, The bowling of Misses D. **Kerwin**, (six wickets), and C **Kerwin** (3) proving too destructive. The printers batted with broom handles, left-handed, and fielded and caught with one hand only. It was an enjoyable match, and was watched by a good number of spectators. A pleasant musical evening was afterwards spent.

Cricket at Woodford Q

Picture Queensland Image

////////////////////////////////////

HISTORICAL MOTORCYCLE CLUB OF QUEENSLAND

IPSWICH BRANCH

In August 1987 the first gathering of the Ipswich Motorcycle Club was held in a shed at the home of Robin **Stubbs** in Reif Street, Finders View. A decision was soon made to form a Branch of the Historical Motorcycle Club in Ipswich, and the inaugural meeting was on 3rd February 1988, in Robin's shed.

The meetings were later held at the Ipswich Railway Institute Hall, until a move was made to "Cooneana" at the invitation of the Ipswich Historical Society to become a part of the Heritage Centre.

Meetings are held on the first Wednesday of the month at 7.30pm in the club house.

Membership is open to ordinary or family members, and for more information go to: www.historicmotorcycle.org.au



The Club House at "Cooneana" Heritage Centre

Editor's Collection

WEST MORETON LAND SELECTION COURT.

4 March 1872

The usual monthly Land Court was held on Friday, at the Court-house, before Mr. R. J. **Smith**, Crown Lands Commissioner for West Moreton. Thirty-four applications came before the Court, of which three were rejected and the remainder approved. The following is a list of the applications:—

HOMESTEAD SELECTIONS—AGRICULTURAL.

Carl F. **Olburg**, 45 acres, parish of Alfred.

PASTORAL

Andres Peter **Jorensen**, 70 acres, Blenheim

David **Augerstien**, 50 acres, Walloon

Robert **Barclay**, 160 acres, Taylor

Gustav **Schimming**, 80 acres, Walloon

Arthur **M'Ilvana**, 160 acres, Tenthill

Daniel **M'Mullin**, 100 acres, Brassall

Frederick **Neumann**, 129 acres 3 roods, Walloon; rejected

John M. **Bengston**, 88 acres, Mort

James **Gardener**, 160 acres, Dundas

George **Hunt**, 33 acres, Goodna; rejected

Michael **Portey**, 80 acres, Blenheim

John **Titmarsh**, 80 acres, Fassifern

Robert **Holler**, 80 acres, Walloon

Albert **Week**, 80 acres, Walloon

Mathew **Mullins**, 60 acres, Flinders.

CONDITIONAL PURCHASES—AGRICULTURAL

Robert **Forsyth**, 57 acres, Coochin

William **Butler**, 40 acres, Durandur.

FIRST-CLASS PASTORAL

Robert **Barclay**, 160 acres, Taylor

William **Butler**, 80 acres, Durandur.

William **Butler**, 80 acres, Durandur

SECOND OLASS PASTORAL

John **Campbell**, 80 acres, Fassifern

Michael **Martin**, 120a. 0r. 12p, Ipswich

William **Butler**, 920 acres, Durandur

Robert **Tallon**, 467 acres, Chuwar ; rejected

Thomas **Abell**, 200 acres, Dugandan

William Charles **Garvey**, 200 acres, Kholo

Patrick **Hughes**, 80 acres, Blenheim

William, **Butler**, 460 acres, Durandur

Lewis **Thomas**, 100 acres 1 rood, Goodna

William **Bates**, 92 acres, Bundamba

William **Butler**, 560 acres, Durandur

PRE-EMPTIVE SELECTIONS—AGRICULTURAL

Henry **Mort**, 200 acres, Franklyn Vale

Henry **Mort**, 808 acres, Franklyn Vale.

Henry **Mort**, 80 acres, Franklyn Vale

FIRST CLASS PASTORAL

Henry **Mort**, 300 acres, Franklyn Vale

Henry **Mort**, 400 acres, Franklyn Vale.

Henry **Mort**, 80 acres, Franklyn Vale

SECOND-CLASS PASTORAL

Henry **Mort**, 330 acres, Franklyn Vale

Henry **Mort**, 200 acres, Franklyn Vale.

Henry **Mort**, 162 acres, Franklyn Vale

IMMIGRATION SELECTIONS

John **Batten**, 40 acres, Walloon

John **Westphal**, 40 acres, Walloon.

—Ipswich Observer March 1872

DUE FOR RELEASE in NOVEMBER

One CD / USB with over 3,000 entries - \$25.00 + \$5 P&P

Produced by the Ipswich Genealogical Society Inc

FROM RAIL TO WAR

*Queensland Railways Employees who enlisted in
the Great War 1914 – 1918*

&

The Anglo Boer War 1899 – 1902

Also included are the Munition Workers, who sailed to the United Kingdom and worked in the Munition Factories to help with the war effort, and the men who reported for Garrison Duty on Thursday Island 1914 – 1918, the Australian Naval & Military Expeditionary Forces.

Your choice of a CD or USB will be available in November, with information from both Queensland Railway and Defence Records for over 3,000 Queensland Rail employees, who enlisted in the Great War between 1914 and 1918.

.....

World War 1 somewhere in France.



Image Courtesy The Workshops Rail Museum

One CD / USB with over 3,000 entries - \$25.00 + \$5 P&P

“FROM RAIL TO WAR” fully searchable data base.

Kindly forward CDs [] USBs [] \$

Name:.....

Address:

.....

..... Post Code

Ipswich Genealogical Society PO Box 323 Ipswich 4305:

Payment:.....

Cheque or Money Order accepted

Bank Details:

Ipswich Genealogical Society Library Acc.

Bendigo BSB 633 000

Account No. 115409641



AUDIT STATEMENT

I have undertaken an audit of the books of account of the Ipswich Genealogical Society Inc for the year ending 30 June 2018 in accordance with the Financial Administration and Audit Act 1997-1998

In my opinion the books of the Club are kept in accordance with the Act and in line with the Club's Constitution and the statements of account provided to the Club represent a fair and accurate view of the transactions of the Club for the relevant year of operation and the financial position of the Club at the close of the year.

The only assets of the Club is the cash at bank and fixed assets as per the statements and the Club has no liabilities.

The Club has no mortgages, charges or securities of any kind affecting the property of the Club.

A handwritten signature in black ink, appearing to read "Andrew Wilson".

Andrew Wilson BBus

Dated this 14th August 2018

H&R BLOCK (Ipswich)
Shop 3, 158 Brisbane Road
BOOVAL QLD 4304

ipswich@hrblock.com.au
www.hrblock.com.au

Ph: (07) 3816 0607
Fax: (07) 3816 0614
PO Box 593
BOOVAL QLD 4304

Independently owned and operated by
Accounting & R&S Services Pty Ltd (ABN 45 107 004 000)

Ipswich Genealogical Society
Statement of Income & Expenditure for the Year ended 30th June 2018

Opening Bank Balance 01.07.2017		\$ 22,536.78
Income		
Addes		
Memberships	\$ 3,320.00	
Research Fees	\$ 190.00	
Door Money	\$ 122.90	
Sale of Publications & Novelties	\$ 236.10	
Donations	\$ 11,685.00	
Printouts & Photocopies	\$ 147.90	
Sundry Income	\$ 569.80	
Refund of Building Costs	\$ 2,380.40	
		<u>\$ 18,652.10</u>
Available for distribution		\$ 41,188.88
Less Expenses		
Printing & Stationery	\$ 1,348.50	
Telephone	\$ 1,221.27	
Purchase of Books etc	\$ 320.25	
Subscriptions & Fees	\$ 2,387.00	
Computer Repairs	\$ 1,399.00	
Extension & Refurbishment of House	\$ 15,940.48	
Audit Fees	\$ 110.00	
Banner	\$ 344.00	
Sundry Expenses	\$ 387.50	
		<u>\$ 23,458.00</u>
Closing Bank Balance 30.06.2018		<u>\$ 17,730.88</u>

Eric Clarke Treasurer



The “Brynhyfryd” water tank Blackstone Hill - Editor’s collection

MANAGEMENT COMMITTEE 2018 – 2019

Patron	Kylie STONEMAN	
President	Irma DEAS	3282.3067
Vice President	Claire JULER	0407690898
General Secretary	Kathryn BOGGAN	secretary@igs.org.au
Treasurer	Eric CLARKE	3201.4192
Librarian	Angela YARHAM	3288.8088
Magazine Editor	Irma DEAS	3282.3067
	email: secretary@igs.org.au	
Committee Members	Edith HENRY	3202.1023
	Chris LLOYD	3281.5084
	Judy-Ann SMITH	3202.3597
Research Officer	Michael O'REILLY	3288.9686
Membership Secretary & Roster Co-ordinator	Claire JULER	0407690898
Scrapbook Compiler BD&M and General News	Judy-Ann SMITH	3202.3597



COPYRIGHT: Kindred Societies may reprint information from this magazine (unless marked copyright), provided that full acknowledgement of 'Bremer Echoes' as a source is given.

////////////////////

The IPSWICH GENEALOGICAL SOCIETY INC. does not accept responsibility for opinions expressed in this magazine.

With Thanks to the Ipswich City Council Division 4 Community Office for their assistance in the printing of Bremer Echoes.