

# **BREMER ECHOES**

***OUR FOREBEARS PAST, YET PRESENT STILL***



***IPSWICH GENEALOGICAL SOCIETY INC***

***VOLUME 35 NO 2***

***JULY 2017***

## **RESEARCH ROOMS & LIBRARY**

### **“Brigg House”**

Cooneana Heritage Centre  
1041 Redbank Plains Road,  
New Chum, Ipswich 4303

Please address all correspondence to:  
The Secretary, P.O.Box 323, IPSWICH Q. 4305

Email: [secretary@igs.org.au](mailto:secretary@igs.org.au)

Website: <http://www.igs.org.au>

**MONTHLY MEETING: SECOND** Tuesday of the month at 9.30am  
[except January]

**Division 4 Community Meeting Room Station Rd. Booval  
Friendly Care Chemist Building**

**Dues are payable by 30th September.**

<b>Subscriptions New Single Membership</b>	<b>\$50</b>
<b>New Family – 2 members residing at the same address</b>	<b>\$65</b>
<b>Renewal Single Membership</b>	<b>\$40</b>
<b>Renewal Family Membership 2 members residing at the same address</b>	<b>\$55</b>
<b>Journal only subscription</b>	<b>\$10</b>

Visitors welcome at Research Library per day \$20; ½ day \$10;

Research undertaken by post – Initial Research Fee \$30

Additional Research fees charged at rate of \$25 per hour or part thereof.

Annual Membership includes Society's magazine Bremer Echoes  
February, July, & November, posted or emailed.

Out of town members entitled to research on their behalf from Society records.

### **OPENING HOURS**

**Monday & Thursday 9.30am to 2.30pm**  
**Saturday 9am to 12 noon – Closed Sunday**  
**Closed all Public Holidays**

### **COVER PHOTOGRAPH:**

“Brigg House” Cooneana Heritage Centre with the Historic  
Motor Cycle Club House in the background.

20<sup>th</sup> May 2017

## **BREMER ECHOES**

ISSN 1443-315X

Volume 35 No 2

July 2017

**The Journal of the IPSWICH GENEALOGICAL SOCIETY INC**

**The First Genealogical Society in Queensland 1977**



<i>Official Opening of Brigg House</i>	<i>page 6</i>
<i>Forty Years</i>	<i>page 8</i>
<i>Mystery Solved – J.COWPER</i>	<i>page 10</i>
<i>Changes in Ipswich 1930's &amp; '40's</i>	<i>page 12</i>
<i>Blackstone School photos</i>	<i>page 15</i>
<i>Snippets from TROVE</i>	<i>page 16</i>
<i>Our Women Folk – by 'Red Gum'</i>	<i>page 18</i>
<i>Gathering of the Clans</i>	<i>page 22</i>



COPYRIGHT: Kindred Societies may reprint information from this magazine (unless marked copyright), provided that full acknowledgement of 'Bremer Echoes' as a source is given.

**A Few words from the President/Editor:**

A busy few months leading up to our Open House 40<sup>th</sup> Anniversary combined on 24<sup>th</sup> March; more on page 5.

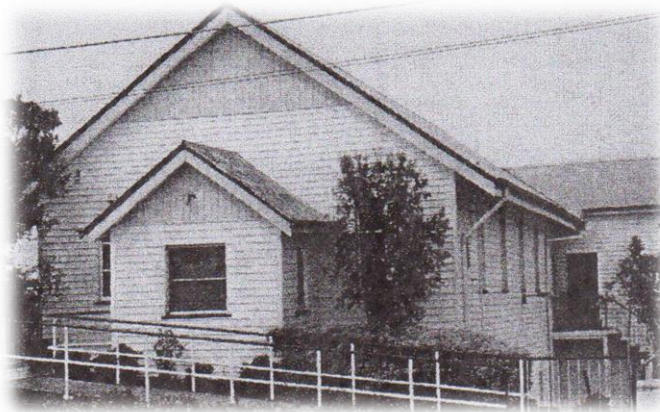
Our exciting news is that the Society was successful with our application to Cleanaway for a Grant to have the necessary repairs made to Brigg House. We look forward to hopefully having this all finished before Christmas.

The central part of early Ipswich is featured in this edition, and the information was extracted from TROVE [digitized newspapers on line]. Brisbane Street has been one-way since the 1960's, and there have been many changes over time, but it has always been the main artery of the city.

Included with this edition are a membership renewal form and the notice for the Annual General Meeting in September.

All positions will be declared vacant, so please give some thought to nominating for a position on the Committee.

*Irma*



*St Andrew's Presbyterian Church North Ipswich*

*[Now home to another religion]*

*The search for an early photograph has been unsuccessful*

*Can you help please?*

***Welcome to the following new and re-joining members  
and may they have success with their research***

Patricia Lennon re-joined; Maria Bogie re-joined; Dorothy Clem re-joined; Sheryl Brennan re-joined; Kenneth Groube; Richard Moores; Robert Walker; Tony Hyde; Sharon Putland & Gay Caseldine; Valmai Jackwitz; Kathy Cameron; Jill Patterson;

## 2017 ANNUAL GENERAL MEETING

### PLEASE NOTE

Annual General Meeting of The Ipswich Genealogical Society Inc  
Tuesday 12<sup>th</sup> September 2017 at 9.30 am  
The monthly General and Committee Meeting will follow.

Division 4 Community Meeting Room Station Road Booval  
All welcome.

Nomination forms are available at  
“Brigg House”, Cooneana Heritage Centre,  
1041 Redbank Plains Road,  
New Chum, Q. 4303

Please return the forms to:

The Secretary PO Box 323 Ipswich 4305  
by 1<sup>st</sup> September 2017

### AGM AGENDA

Minutes from the 2015 Annual General Meeting

Business arising from the minutes

President's Report

Treasurer's Report

Election of Officers

President

Vice President

Secretary

Treasurer

Appointment of Auditor

Please inform the Secretary of any other business you wish to include  
on the Agenda by Monday 28<sup>th</sup> August 2016.

*Irma Deas,*  
*President Ipswich Genealogical Society Inc*



## OFFICIAL OPENING OF BRIGG HOUSE

The rains came down on Wednesday 22<sup>nd</sup> March, and Society Members were worried that it would be a wet Friday, but the sun shone and even though we had to fence off an area which had been planted recently with turf, all went well.

Councillor Kerry Silver introduced Mayor Paul Pisasale who Officially Opened “Brigg House” and the Council was well represented with the majority of Councillors attending. The Society members thank the Council for their permanent home, and for their ongoing support. Members look forward to working with the other groups at Cooneana Heritage Centre and appreciate their warm welcome.

Members and guests enjoyed catching up with old friends and new ones were made. Amazing what a cup of tea and a chat can do and the morning tea set out by members was well received.



A Cake was cut to Celebrate 40 years of Family History Research in Ipswich, and this traditional iced fruit cake was popular with the guests who also enjoyed a light sponge to mark the official opening of “Brigg House”.

Councillor Kerry Silver, Mayor Paul Pisasale, and President Irma Deas on the deck of “Brigg House” with some of the guests  
*Note the fenced off area too wet to walk on.*



## Lots of Snaps



**Councillors** Andrew Antonioli, Cheryl Bromage, Paul Tully and Sheila Ireland – four of the eight City Councillors who joined other visitors attending the Opening of “Brigg House”



**Cutting the Ribbon** – Councillor Kerry Silver, President Irma Deas and Mayor Paul Pisasale  
*Courtesy Graham Muller*

## FORTY YEARS

*Irma Deas*

Perhaps in our 40<sup>th</sup> year it is time to look back to when the Society was first formed by members of the Church of Jesus Christ of the Latter Day Saints, Ipswich. A notice in the Queensland Times in 1977 asking people interested in tracing their family history, to attend a meeting, was the beginning of the first Genealogical Society in Queensland. The Queensland Times of 12<sup>th</sup> September 1977 stated that 35 people attended the meeting and their ages ranged from 20 to 70 years.

The Officers elected were: President Warren STONE; Vice President Ian WATERS; Secretary Robertus Van EGDOM; Committee – Norman MANN, Christine VERRAL; Dorothy MARLES and Greg COOK. [*There was no Treasurer mentioned in the QT*]

The meetings were held on the 4<sup>th</sup> Wednesday of the month, but by June 1978 after a Society was formed in Brisbane, Ipswich became a Branch of the Genealogical Society of Queensland. This continued until 1985 when a break was made and the Ipswich Branch voted to become incorporated “in their own right”, and the Ipswich Genealogical Society Inc. was formed.

A Circular was sent to Branches of GSQ stating: “*At a Special Meeting held on the 9<sup>th</sup> July 1985 Ipswich Members voted 36 to 1 for the Motion That the Ipswich Branch of the Genealogical Society of Queensland be Dis-banded as from five minutes past eight p.m., 9<sup>th</sup> July 1985.*”

There were a number of reasons for the decision, the main one being no attempt had been made to become incorporated, and members felt that this was a priority. The notice concluded with the following:

*“Although we have seceded we are still prepared to co-operate with GSQ in Genealogical and Family History pursuits”*

Over the years the Society has been managed by hard working members, who have added to our Library both by purchasing equipment and resources and creating comprehensive Indexes for the use of members and visitors. A number of publications have been produced, which have been well received.

There have been many changes in the way research is carried out in the last couple of decades, and it is now much easier to access resources. The days of writing letters [and awaiting replies] seem to be gone; today it is email, much quicker, but not the same as having the joy of opening an eagerly awaited letter in anticipation of exciting news. Many of us print off the emails and keep them but many do not, and the information can be lost over time when computers are upgraded or “die”. A hand written letter is rarely seen today, and it appears children cannot read “running writing” so personal letters will not be kept as they once were. Those of us lucky enough to have letters written by our grandparents treasure them as a reminder of loved ones gone, and they often contain family news that would otherwise never be known.



When you look back and think how life has changed since 1977 when our Society began, you realize that we have lived through an exciting time. The world of family history research is very different today to what we had forty years ago when visits to Archives, Libraries, Family History or Genealogical Societies as well as talking to elderly relatives was the way research was carried out.

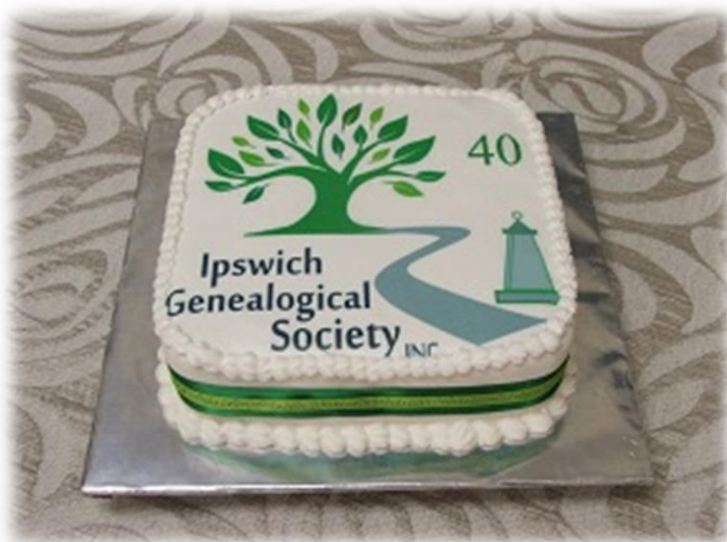


**Cutting the 20<sup>th</sup> Birthday Cake 1997** Eva MacPherson, Muriel Titmarsh, Warren Stone, Gareth Gillott, Heather Preston, Betty Donald, May Willis, Robyn Steiler.

Very few could travel overseas to visit the birth place of an ancestor, or even visit cemeteries in other states searching the names on the gravestones. Today travel is so much easier and quicker that many take advantage and holiday and also research those special places.

It will be interesting to see what the next decade brings – for those lucky enough to still be here – as we wonder how many more advances will be made in the electronic world.

Hopefully now that we are settled in a permanent home and with the support of the Council and the other groups at the Heritage Centre, our Society will continue to grow and help research and preserve the history of Ipswich and its families.



*The Traditional Iced Fruit Cake celebrating 40 years of the Ipswich Genealogical Society Inc*

## MYSTERY SOLVED



Two large framed photographs were recently donated to the Society, one which is not in good condition, was named as Thompson COWPER, but the other had no identification.

The un-known soldier in the second photograph [above] is a handsome young man but without colour patches or insignia on his uniform to identify his unit. It was known that two Cowper brothers joined the AIF and were both sent overseas during the First World War. Was the second photograph Jonathan COWPER brother to Thompson?

An appeal in local newspapers brought a number of replies, and the soldier was identified as Jonathon or “Nugget” who was the sixth child of Thompson COWPER and Elizabeth Ann PACEY, born in 1883 in Hartlepool, Durham, England.

On the 2<sup>nd</sup> June 1885 the family sailed from London, on the “Dorunda” bound for a new life in Queensland. They arrived on the 1<sup>st</sup> August 1885 in Brisbane then settled in Ipswich where Thompson junior, was born within a few weeks.

*Researched by Betty McDonald*



**John "Nugget" "Jim" Cowper (1883 – 1947)**

John was born in 1883 at Hartlepool Durham England, John arrived with his family to Australia in 1885. John worked at Blackheath Colliery as a coal miner. John joined the 15<sup>th</sup> Battalion in September 1915 and left Queensland in March 1916.

John spent time in Guildford War Hospital Surrey UK suffering from trench feet.

John did not marry and lived in Mackay working as a miner after the war. John is buried at Mackay Cemetery in the Methodist section, however, in his funeral notice it states that he is buried in the soldier section of the Mackay Cemetery.

*Researched by Betty McDonald & Michael O'Reilly*



**Thompson Cowper (1885 – 1962)**

Thompson was born in 1885 at Ipswich Queensland and joined the 47<sup>th</sup> Battalion for the 1914 war in 1916. It is reported in the Queensland Times that Thompson was wounded (received a gunshot wound – GSW – to the chest) in France and made invalided on his return home from the war

in 1918. In Thompson's war papers it states that he worked as a painter and had done his apprenticeship with "McDonald, Ipswich 5 years." After the war Thompson continued to work as a painter. He married Irene Margaret Wilkins 22 January 1941.

Thomson died on 17<sup>th</sup> November 1962 and is buried at Redcliffe.

*Certificate Copies courtesy Suzanne Millar*



## CHANGES TO IPSWICH IN 1930's & 1940's

*QT 27 November 1929*

### WOOLWORTHS: NEW STORE

Alterations to Mr. A. E. Preddey's buildings, which till recently were occupied by Mr. A. D. Crichton, have been completed, providing a big, airy and well lighted store embodying the essentials of efficient service. Woolworths begin their Ipswich business in the remodelled shop tomorrow morning. The shop prior to the alterations comprised two floors. The back of the ground floor was knocked out, and the walls extended 54 feet, giving a first-floor shop space of 106ft by 30ft.

The addition was to only the first storey. This was built with a substantial principal roof with lantern lights, which make the use of artificial light inside unnecessary in the day time. The shop front is particularly attractive. It comprises two windows with curved glass, and show cases, with the woodwork of Queensland maple. The lower part is tiled in black. The inside of the building has been painted cream colour, with the exception of part of the eastern wall, which is tastefully panelled with the maple. The remainder of the wall is brightened with red borders, in the centre of which is the firm's initial in gold. The ceiling is of cream painted asbestos contrasting with the brown panelling. The colours chosen for the walls and the lantern lighting above make the interior particularly inviting. The work of transformation took five weeks.

With the pushing back of the building, a big cellar was built for storage. This is to be sectioned off with bins in which commodities will be grouped for the purpose of facilitating the work of the basement staff. On the upper floor rooms have been changed for the benefit of the employees who will have a room for meals, lockers and an apartment for the washing of their dishes.

The appointments on the shop floor are up-to-date. The whole of the long line of counters and fixtures are of beautiful Oriental maple. Shelving and counters run along the western, northern and part of the eastern wall, and are so arranged as to provide for big displays of stocks. The panelling on the remainder of the eastern wall is set with velvet on which goods also will be shown. Three island counters, designed for display, and to enable the staff to give most efficient service, stand in the centre of the floor.

The ventilation of the building is assisted by three fans suspended from the ceiling. Twenty-four electric lights have been installed. The counters have been divided carefully into sections for the handling of specific types of stocks. From the entrance on the western side the order is sweets, stationery, cutlery, men's ware (*sic*), hardware, kitchenware, China, glassware, toys and hosiery and gloves. The three island counters are for business in perfumery, fancy goods, and drapery. Each section has a cash register of its own. Business is to be done with music, for which a phonograph with an electric amplifier has been installed. The staff numbers 30. Twenty are girls, who will be dressed alike in red costumes.



*Queensland Times 25<sup>th</sup> November 1930*



*Brisbane Street from St Paul's Anglican Church c1902; Blackall Monument in its original setting - Whitehead Collection Courtesy Picture Ipswich*

## WIDENING BRISBANE-STREET

Recently the Ipswich Chamber of Commerce suggested to the City Council the advisability of reducing the width of the footpaths surrounding the Church of England property by at least 4ft., also that Brisbane Street, between Nicholas and Ellenborough Streets, be reconditioned on up-to-date lines. The City Council yesterday agreed to the recommendation of the Works

Committee, that the City Engineer be instructed to submit a report on, and an estimate of the cost of the works suggested.

*Under the heading "IPSWICH IMPROVES", the readers of the Queensland Times on the 24<sup>th</sup> April 1941 were told of the changes taking place in the city.*

The work in progress included a new police station, the new maternity ward, new quarters for hospital nurses, and an addition to the Technical College, while several shops had new fronts added. The changes also extended to the awnings above the shops – *"Ipswich is gradually losing those old, perhaps venerable, but certainly un-attractive relics of other days"*



*Brisbane Street – 1941. Funeral procession for two men killed in a plane crash.*

*Whitehead Collection*

*Courtesy Picture Ipswich*

*Note the cement centre of the road as far as Bell Street.*

*"In the city itself a steam-roller and grader are busy tearing up the section between Bell and East Streets preparatory to the laying of concrete, thus completing the section, from Nicholas-street down.*



*The Ritz Café next to the Ritz Theatre.*

*Whitehead Collection*

*Courtesy Picture*

*Ipswich*

The latest period of shop improvements began with the alteration and modernisation of windows in the store of Bayards Ltd., Brisbane-street, and included an entirely

new cafe in Bell-street, the Ritz Cafe, a remodelled cafe next to Bayards Ltd., the Regal Cafe, a new shop front in Ellenborough-street, formerly a produce store, the transfer of Mr. J. P. O'Dea's tobacconist shop from Brisbane-street to Bell-street, and the alteration of Mr. O'Dea's former headquarters into a modern frock salon.

Mr. O'Dea had carried on business in the little Brisbane-street shop for 35 years, and his move to more commodious rooms in Bell-street recalls memories of the disposition of this section of Ipswich business property. It passed from the hands of the late Dr Lightoller to Messrs. Cribb and Foote, then became the property of the present Mayor (Ald. J. C. Minnis), and finally of Preddey's Ltd. Now the section comprising Woolworths Ltd. store and the old tobacco shop is leased to Woolworths."

*Queensland Times 24th June 1944*

## CITY IMPROVEMENTS BRISBANE STREET WORK, IPSWICH

The City Council has completed the laying of concrete slabs on the footpath in Brisbane-street, from Cribb and Foote's motor garage to Parkinson and Flynn's business premises and the result has been a decided improvement. After standing idle for some considerable time, the Lyric Theatre in Brisbane Street will be occupied. Mr. W. B. Gill (architect) is preparing plans for turning it into a motor garage.

////////////////////

*Remember age is all in the mind.  
The trick is to keep it from creeping into your body.*

### **BLACKSTONE SCHOOL PHOTOS**

These school photos are thought to be taken at Blackstone school, but the names of the children and the date are unknown. Can you help?

Please contact the Society – details inside front cover.



*Courtesy Picture Ipswich*

## **SNIPPETS FROM TROVE.**

*Queensland Times 13th April 1939*

### **Saluting Base for Anzac Day**

At the last meeting of the present Ipswich City Council a request by the Anzac Day Committee for leave to have a saluting base erected In Brisbane Street for the observance on April 25 was granted.

The financial report showed the following balances: General fund, cr. £11,877; sewerage loan account, cr. £9872; water supply account, cr. £8240; water extension loan account, cr. £8984.

A proposal that an incapacitated soldier should be granted exemption from rates owing on his property was referred back to the finance committee. Ald. Dwyer took exception to people who owned properties in the city for speculative purposes and lived in another municipality being granted remission of rates. It was pointed out to him that the land involved In this case was unused and difficult to sell.

### **Bremer Bridge Approach**

The Co-ordinator-General of Public Works advised that the Premier had decided to constitute a committee to study the question of improving the approach to the northern end of the Bremer Bridge. The personnel proposed were representatives of the council, the Main Roads Commission, and the Railway Department. The Mayor was appointed Ipswich representative.

The park committee reported that it was negotiating with the estate of the late Miss Ellen Barry for the purchase of 11½ acres at East Ipswich for a sports ground. Inquiries also had been made with the Treasury for a loan for the purpose.

In two Instances the Department of Water supply and Sewerage Inquired why the council had favoured tenders for contracts, which were not the lowest. The council adhered to its recommendation.

### **Memorial Hall Proposal**

The sewerage committee had proposed that in agreement should be entered into with the School of Arts Committee for the use of a greater proportion of its floor space at the Memorial Hall. It was reported that the Institution was opposed to the plan, but was agreeable to exchange the whole of its floor in the Memorial Hall for rooms in the Town Hall if the council would still pay it £133 in lieu of rent and £100 subsidy.

Because it was believed that the Memorial Hall Committee had jurisdiction over the whole building, the council referred the matter to the city solicitor.



*Queensland Times 13<sup>th</sup> April 1939*

### **Dangerous Practice.**

The practice of cyclists holding on to the back of cars and buses when ascending hills was described as very dangerous by Senior Sergeant James when prosecuting James Herbert Harper, South Street, for having held on to the back of a motor car as it ascended Limestone Hill. Harper pleaded guilty by letter, and was fined 15/-, with 6/- costs, in default three days imprisonment.

*Queensland Times 22 June 1931*

**Mrs. Lucy M'Murtrie**, wife of Mr. A. M'Murtrie, storekeeper, of Brisbane-road, East Ipswich, who was seriously injured in a motor car collision at the intersection of Brisbane and Thorn streets on the night of May 29 and who was taken to the Ipswich Hospital, died yesterday.

The late Mrs. M'Murtrie, who was 59 years of age, is survived by her husband and a grown-up family.

*QT 16th November 1929*

The death occurred on Thursday of **Mr. John Alexander McWatters**, at the age of 68 years. Born in Belfast, Ireland, he came to Queensland with his parents when a year old. He was employed by the Railway Department at Maryborough for a number of years and later was transferred to Ipswich. He retired about a year ago.

**Mrs. John Greenham**, died at her home on Salisbury Road, Ipswich yesterday. She was 66 years. A native of the North of Ireland, she came to Australia about 60 years ago. Mrs. *Eleanor* Greenham had been suffering from

heart trouble for only a few days prior to her death, and the end came quite suddenly.

She is survived by Mr. Greenham, who is now 88 years of age, and two sons and a daughter. Henry Greenham (Woolloowin), Herbert Francis Greenham (Chicago), and Dr. Eleanor Greenham Brisbane.

*Dr Eleanor GREENHAM was the first Queensland born woman to graduate in Medicine and practice in the State.*

1907

*Nurse Unknown, Matron Capner standing behind chair Dr Eleanor GREENHAM seated.  
From Editor's collection*



*Queensland Times 22 August 1914 [TROVE]*

## **OUR WOMENFOLK** (By "'Red Gum'")

The question has on many occasions been put to me — "What about the women pioneers?"

In that connection I may state there are still with us in Ipswich, quite a number of female pioneers, whose arrival in this city, date as far back as 1848.

I was sorry to notice the demise of Mrs. G. W. Keith, at Sydney, on the 10<sup>th</sup> August. This lady arrived in Moreton Bay with her first husband (the late Mr. William Cramb, a well-known contractor of the sixty and seventy period, over 50 years ago. Most of her life had been passed in Ipswich, and while that it may not have been generally known was a contributor to the Press, and that she wrote the memoriam poem on the death of the heroine of Lizard Island (Mrs. Watson), which was an excellent contribution. Her literary abilities adorned many of the leading columns of the principal newspapers in Queensland, Sydney, and Melbourne.

I frequently met the lady in 1879, while I was engaged on the "Ipswich Observer," the office of which was situated in Nicholas-street, as she was the leader-writer of that paper during those periods. The late Mr. William Cramb died at Ipswich, about 35 years ago, and in 1881 Mrs. Cramb was married to the late Mr. Geo. W. Keith, a literary gentleman who, with Mr. H. Marcus, established the "Ipswich Advocate."

Since 1883 Mrs. Keith has resided off and on between Brisbane and Sydney, but for the next 20 years her home has principally been in the latter city. Mrs. Keith was, I think, the founder of the Lady Musgrave Lodge in Brisbane, and in works of charity her name was to be found on many committees in Brisbane and in this city.

Mrs. D. Kerr, of Maryborough, who is at present visiting her relatives (Mr. Hugh Campbell sen. and family), in Limestone-street, dates her arrival in this city as far back as 1848, her parents (the late Mr. and Mrs. Malcolm M'Lean) having arrived here from the New South Wales side via Cunningham's Gap per medium of a bullock-dray, and they first settled down on what is now the site of the Central Hotel in Nicholas Street.

Mrs. Kerr arrived in New South Wales from Scotland in the ship *Midlothian*, in 1836, so that this lady has resided in Australia for 78 years. She some years ago favoured me with a very graphic description of the family trip from New South Wales through Cunningham's Gap.

The late Mr. Malcolm M'Lean brought milk cows and poultry along with him, and there were five daughters and two sons, the late Mr. Alexander ("Sandy") M'Lean, so well and popularly known Ipswich as a publican subsequently, and Mr. James M'Lean (the present city inspector). They had fresh eggs and butter and fresh bread during the whole trip.

The late Mr. Malcolm M'Lean started a butchering business in Nicholas-street, about on the site of the old coffee-stall. At a later period he opened the Steam Packet Hotel, erected by the late Mr. Martin Byrne, on the corner of Bremer and East Streets, now the private residence of Mr. W. J. Livermore, the cordial manufacturer.

Another pioneer lady of New South Wales and Moreton Bay (now Queensland) is Mrs. John M'Donald, of The Terrace, North Ipswich. Mrs. M'Donald, who is approaching her 89th birthday, arrived in Sydney, in 1844. She is, so far as I know, the only survivor of the late Lieut.-Col. Barney's expedition formed in 1847, to establish a settlement at Port Curtis, now known as Gladstone.

During the fifties the late Mr. John M'Donald was proprietor of the celebrated Queen's Arms Hotel -the rendezvous of most of the squatters of the Darling Downs, of 60 years ago-now the site of the Queensland National Bank, on the corner of East and Brisbane Streets.

There are likewise a number of female pioneers who date their residence here from 1850 to 1859. Not so long ago I enjoyed quite a pleasant hour in listening to the experiences related by Mrs. P. O'Sullivan, of Woodend, the wife of the late Mr. Patrick O'Sullivan, who was one of Ipswich's most stalwart pioneers, and who was likewise one of this city's first Parliamentary representatives having been elected to the Legislative Assembly on the 10th of May, 1860, his co-M.L.A., being the late Hon. Arthur Macalister and Mr. F. A. Forbes.

Mrs. O'Sullivan's parents hailed from County Limerick, Ireland, and came to Moreton Bay in the sailing ship Emigrant in the year 1850. Her father succumbed to fever on the arrival of the vessel in Moreton Bay, and her mother, the late Mrs. Real, a fine dear old lady she was, too was left with six children, three daughters and three sons- to battle by herself in an entirely new land.

The sons were afterwards well-known citizens of Ipswich- namely, Messrs. James, Michael, and Patrick the last-named being his Honour P. Real, the senior \*\*Puisne Judge of the Supreme Court of Queensland.

There were two sisters, one of whom is Mrs. P. Copeley, and the other is in the holy orders (a nun) at Sydney. Mrs. P O'Sullivan, whose second son, the Hon. Thomas O'Sullivan Attorney General has just returned from a trip to the old country, says that her mother experienced very hard times after their arrival here 61 years ago, and included among her fellow passengers was the late Hon. John Clarke Foote, M.L.C., and his sister, Mrs. Thomas Bennett, of Limestone - street.

Mrs. O'Sullivan was always a very homely woman, and did not move much about in everyday life-there was always plenty to do within the home circle. She states that her brothers soon established themselves in Ipswich and, like Judge Real, they were very determined men, her brother the late Mr. Michael Real, occupied the highest civic position Ipswich could place him in--

namely, Mayor of Ipswich in 1901.

In reference to the late Mr. P. O'Sullivan, she says, no one knew but herself, the extent of his kindness - it was unbounded, and said she, his hand never seemed out of his pocket. Asked if she was intimately acquainted with the late Mrs. K.I.O'Doherty, the onetime popular Irish poetess-"Eva," of the "Nation," and wife of the late Dr. O'Doherty who, during the early sixties, was a resident of Ipswich. Mrs. O'Sullivan replied :--"Yes Miss Mary Kelly was her maiden name, and she was one of the gentlest women I ever conversed with, and one would never have thought that she was the brilliant literary genius of Ireland : so quiet was she in her doings while a resident of Ipswich I often chatted with her, and it was an inspiration to converse with her".

Mrs. P. O'Sullivan is still hale and hearty, and she takes a keen interest in the advancement of the city which, when she first stepped into it, was only a village of wooden or slab buildings with shingled roofs.

*(I was unable to find a photograph / portrait of any of the ladies mentioned, there were some of the men Ed.)*

*\*\* Puisne Judge – Justices of the superior Courts other than the Chief Justice.  
From Reader's Digest Great Encyclopaedic Dictionary*

*QT 26 March 1904*

F. W. Johnson, CITY COACH WORKS,  
Brisbane-street, Ipswich  
The Oldest-Established  
Coachbuilder in Ipswich;



*Sulky built by City Coach Works  
c1900  
Courtesy Picture Ipswich*

Jump-Seat Sulkies,  
Improved Turn-out Seat  
Buggies, Buckboards,  
Phaetons, Dog-Carts,  
Waggonettes, &c., at lowest  
possible prices.  
Old Vehicles taken in  
Exchange; Cash or Time  
Payment;

F.W.J. lives on the  
Premises;  
Johnson Bros., Undertakers,  
on adjoining Premises



*Queensland Times Tuesday 12 August 1930*

## **GOLDEN WEDDING.**

Mr. and Mrs. James Dick, PURGA. August 11.

A happy and unique event was celebrated at the residence of Mr. and Mrs. James Dick, on Saturday, the occasion being the 50th anniversary of their wedding. Mr. and Mrs. Dick were married at St. Stephen's Presbyterian Church, Ipswich, on August 10, 1880, by the late Rev. P. Robertson, Mr. Dick came to Queensland from Scotland by the sailing ship, Ocean Chief, landing on October 31, 1862, Mr. Dick then being 19 years of age. Mrs. Dick also came from Scotland, landing in Queensland on February 12, 1878.

There are eight sons and three daughters, all of whom are still living. Most of the sons are in farming pursuits. Messrs. Malcolm, Philip, Robert, Thomas, and William are farming in the Purga district, and Mr. James, jun., Muirlea, Mr. Archie Dick is stock inspector at Ayr, North Queensland, and John Dick is a ward attendant at the Sandy Gallop Mental Asylum. Two daughters are married, Mrs. A. Cowell, the eldest, is living at Manly. The second eldest, Mrs. A. L. Hughes, is living at Norman Park, East Brisbane. The youngest daughter is unmarried and is still living with her parents. There are 26 grandchildren.

The whole of the family were present, with the exception of Mr. Archie Dick, his wife, and son. Dinner was served in the spacious dining room at the old homestead.

The tables were beautifully decorated with flowers and ferns. In the centre was a beautiful wedding cake, the work of Mr. Nixon, Brisbane-street Ipswich. The room and table decorations were tastefully arranged by Mrs. Bell, North Ipswich, ably assisted by Miss Dick and other lady members of the family. The day's function was presided over by Rev. R. H. C. Crowe, who has charge of the Presbyterian Church, Church-bank and Harrisville.

The usual toasts were honoured. The health of Mr. and Mrs. Dick was proposed by Mr. James Bennett, of North Ipswich, a very old friend of the Dick family; and responded to by Mr. Dick, on behalf of Mrs. Dick and himself. In the course of the day, many congratulatory letters were received from various centres, expressing the esteem and affection in which both Mr. and Mrs. Dick are held by a very large number of friends. Mr. Dick has lived at the old farm for 68 years. Both the old people are enjoying very good health, and are still keenly interested in the welfare of their family and the district.

50 years

## GATHERING OF THE CLANS



**Claire at the Society Stand**

Saturday 10<sup>th</sup> June, was a beautiful day for the Gathering of the Clans at Limestone Park, Ipswich. The Society was invited to be a part of the day as a stall holder.

Eighteen Bands competed for trophies, and the age difference between the competitors was really noticeable. There were school children and older citizens each giving their best in the competitions.

Scottish and Morris dancers also entertained with their own style and were a joy to watch.

### Photographs from Editor's Collection



**One of the School Bands**



**Mass Bands at the End of the Day**

## **PUBLICATIONS AVAILABLE**

Write to the Secretary PO Box 323, Ipswich Q 4305

**NEW:**      **PLACES OF WORSHIP – Ipswich & District Churches**  
**Short history of some of the churches in the area**  
**\$5.00 + \$2.50 P&P in Australia**

**INDEX TO IPSWICH CEMETERY BURIAL REGISTER 1847 – 2014**

Over 36,000 records giving full name, age, death and burial dates where available      1 CD - \$20.00 + \$6.00 P&P

**INDEX TO IPSWICH GENERAL CEMETERY 1851 - 1992 & Columbarium Wall 1949 - 1992.** One microfiche \$6 includes postage in Australia. This index contains over 15,000 entries with details of name, age and date of death.

**BIRTH, DEATH & MARRIAGE EXTRACTS 1858 – 1865** from The North Australian & Ipswich General Advertiser.    \$10 + \$10.00 P&P in Australia

**CITIZENS OF IPSWICH - 1904** Names of Ipswich citizens in 1904 taken from Available Church Records - Baptisms, Deaths and Marriages, Electoral Rolls, Post Office Directory, Available School Rolls, Queensland Times Reports.  
\$10 + \$10.00 P&P in Australia

**IPSWICH & DISTRICT PIONEER REGISTER - pre 1914;** Pioneer Families of the Ipswich, Gatton, Laidley, Boonah and Esk areas of Queensland.

**Please note prices:**    Set    Volumes 1 & 2 - \$10      + \$18 P&P in Australia

**JUBILEE HISTORY OF IPSWICH 1910** Commemorates the Jubilee of Municipal Government. Reproduced on CD from the original 157 page book  
\$19.50 (\$6.00 P&P)

.....  
***Bremer Echoes can now be sent electronically, and if you would be willing to accept it in this form, and do not receive it this way at present, please contact the Society.***

***The IPSWICH GENEALOGICAL SOCIETY INC. does not accept responsibility for opinions expressed in this magazine.***

## MANAGEMENT COMMITTEE 2016 - 2017

---

Patron	Ipswich City Councillor Kylie STONEMAN	
President	Irma DEAS	3282.3067
Vice President	Claire JULER	0407690898
General Secretary	Elizabeth FORSYTH	3201.6889
Treasurer	Eric CLARKE	3201.4192
Librarian	Angela YARHAM	3288.8088
Magazine Editor	Irma DEAS	3282.3067
	email: <a href="mailto:secretary@igs.org.au">secretary@igs.org.au</a>	
Committee Members	Yolande JAMES	3202.1954
	Edith HENRY	3202.1023
	Chris LLOYD	3281.5084
	Michael O'REILLY	3288.9686
Research Officer		
Membership Secretary & Roster Co-ordinator	Claire JULER	0407690898
Scrapbook Compiler BD&M and General News	Judy-Ann SMITH	3202.3597



**Do you need: Screen printing on that special T Shirt?**

**Your name on a garment?**

**A set of towels with names of the bride and groom, for a special gift?**

**Help to design a new logo?**

**Call and visit Peter Wyman at -**

**BIG HIT TEAM** Shop 7, Bell Arcade, Bell Street, Ipswich  
3282 1108

////////////////////

*With Thanks to the office of Division4 Councillor Kylie Stoneman for their assistance in the printing of Bremer Echoes.*