

BREMER ECHOES

OUR FOREBEARS PAST YET PRESENT STILL



IPSWICH GENEALOGICAL SOCIETY INC

VOLUME 35 NO 1

FEBRUARY 2017

RESEARCH ROOMS & LIBRARY

“Brigg House”

Cooneana Heritage Centre
1041 Redbank Plains Road,
New Chum, Ipswich 4303

Please address all correspondence to:
The Secretary, P.O.Box 323, IPSWICH Q. 4305

Or email: secretary@igs.org.au

Website: <http://www.igs.org.au>

NEW PHONE NUMBER – 07 3282 6454
AT LAST!! WE HAVE AN INTERNET CONNECTION AT “BRIGG HOUSE”

MONTHLY MEETING: SECOND Tuesday of the month at 9.30am
[except January]

Division 4 Community Meeting Room Station Rd. Booval
Shop 2 / 38 Station Rd Booval
Friendly Care Chemist Building

Dues are payable by 30th September.

Subscriptions New Single Membership	\$50
New Family – 2 members residing at the same address	\$65
Renewal Single Membership	\$40
Renewal Family Membership 2 members residing at the same address	\$55
Journal only subscription	\$10

Visitors welcome at Research Library per day \$20 ½ day \$10

Research undertaken by post – Initial Research Fee \$30

Additional Research fees charged at rate of \$25 per hour or part thereof.

Annual Membership includes Society's magazine Bremer Echoes
February, July, & November, posted or emailed.

Out of town members entitled to research on their behalf from Society records.

OPENING HOURS

Monday & Thursday 9.30am to 2.30pm
Saturday 9am to 12 noon – Closed Sunday
Closed all Public Holidays

COVER PHOTOGRAPH:

Ipswich General Hospital Maternity Ward which was demolished in 1999.
Photo [taken 1961] Whitehead Collection-Courtesy Picture Ipswich

BREMER ECHOES

ISSN 1443-315X

Volume 35 No 1

February 2017

The Journal of the IPSWICH GENEALOGICAL SOCIETY INC
The First Genealogical Society in Queensland 1977



<i>Page 5</i>	<i>“Pride of the North no. 23” continued</i>
<i>Page 11</i>	<i>Ebbw Vale Ipswich – smallest suburb</i>
<i>Page 12</i>	<i>St Anne’s Church</i>
<i>Page 14</i>	<i>“Sandhurst” Ebbw Vale</i>
<i>Page 20</i>	<i>Queensland Times Anniversary</i>
<i>Page 21</i>	<i>Ipswich Grammar School Headmasters</i>
<i>Page 22</i>	<i>Invitation</i>

PLEASE NOTE: NEW PHONE NUMBER – 07 3282 6454
AT LAST INTERNET CONNECTED TO “BRIGG HOUSE”



Darwin Sunset - Editor’s Collection

COPYRIGHT: Kindred Societies may reprint information from this magazine (unless marked copyright), provided that full acknowledgement of ‘Bremer Echoes’ as a source is given.

A Few words from the President/Editor:

Welcome to a New Year and I hope Christmas was a time of happiness with family and friends.

The Historical Society and the Genealogical Society are to work with Challenge Employment and Training, to put together a plan to upgrade Brighton House and Brigg House and landscape the area between these two houses and the Historical Motorcycles and also around Jim Donald House.

The project will give a training opportunity in various fields and the Society will meet the cost of the material required and the labour will be supplied by the Trainees. We have applied for a Grant to cover these costs and hope we will be successful.

During the Christmas Break, the back stairs at Brigg House were painted and the deck coated with Decking Oil. Gradually things are coming together and this year more changes are planned.

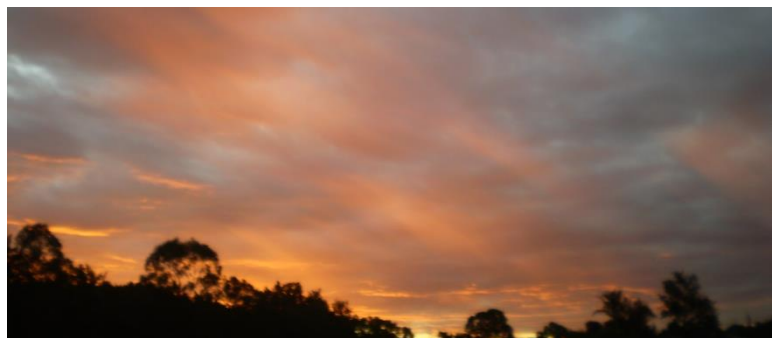
As President I would personally like to thank Michael O'Reilly and my husband Malcolm for all they have done over the Christmas break. They have both spent a considerable amount of time at Brigg House with different projects and I know it will be appreciated by all Society members. Without help from the two men and the other members and their husbands, all those things on the "list to be done" would still be waiting. We are proud of what we have achieved since October.

Continuing in this edition is the article from Brian Jeffrey telling of the changes to Friendly Society Lodges over the years. Thank you Brian very interesting and we have all learnt something of societies which played a big part in the lives of many everyday people.

The Society will have a 40th birthday this year. In September 1977 the first meeting was held to form the first Genealogical Society in Queensland. More information on events will be included in future Bremer Echoes and on our web page: www.igs.org.au

Irma

*Welcome to the following
new members and may
they have success with their
research*



Charmaine KITCHING, Catherine TURNER, Josephine QUIRK,
Helen NORRIS, Marilla CALVERT

Continued from Bremer Echoes November 2016

'PRIDE OF THE NORTH no.23'

A FRIENDLY SOCIETY IN TIMES OF NEED

By Brian Jeffrey

Whatever the stated aims of the 'friendly' societies, they were not immune to petty squabbles among members. Early in 1886, for example, 'Pride of the North no.23' was contemplating how it might mark its first year of operation. Bro. Cook, the Treasurer, pushed for a banquet and soiree, but this suggestion met with objections from some members on the grounds that strong drink might be introduced to such a function. Bro. Alcorn, senior elder, suggested the alternative of a tea meeting. When a committee was appointed nonetheless to proceed with arrangements for a banquet and soiree, those members opposed to the idea asserted that they would not attend. At that point the organizing committee resigned. When supporters of the tea meeting put their proposal to a vote, opinion proved to be equally divided. Bro. Cook had the casting vote and came out against the proposal. The stalemate was enough to draw a permanent line under any talk of celebrating the lodge's anniversary.

In the months following its initial meeting in Rollo's Assembly Rooms, 'Pride of the North no.23' considered the possibility of investing in a hall of its own before coming to an arrangement whereby the proprietor of Rollo's was admitted as a benefit member in return for concessions regarding the rent. This arrangement came to an end when Rollo's Assembly Rooms were put up for sale in October 1890, although the lodge continued to meet in the venue which at first was referred to simply as the Assembly Rooms, North Ipswich and then, after March 1892, as the Olympic Hall. In October 1894 'Pride of the North no.23' transferred to schoolrooms in St. Thomas's Anglican Church in Lawrence Street, North Ipswich. The reason for the move is unclear, although Bro. Shillito, in congratulating the lodge on its change of residence, commented that they had 'got into a much nicer room'. The new arrangement eventually proved inharmonious, however, with the church warden complaining about members smoking and spitting tobacco on the premises. An unsanctioned bonfire which was lit in the school grounds during the winter of 1897 proved to be the last straw and the church peremptorily raised the rent. This had the no doubt intended effect of causing 'Pride of the North no.23' to abandon St. Thomas's towards the end of that year and head back to the Olympic Hall, which would serve as its base for the next 45 years.

Severe economic conditions towards the close of the 19th century presented PAFSs with significant challenges, more so in some areas (eg Rockhampton, Gympie) than others. Some people let their membership lapse while they struggled to pay for even the bare necessities of life, and those members who remained were often in arrears. 'Pride of the North no.23' membership fell from a plateau of 87 in 1889 to a low point of 69 in

1894, although some of the decline can be attributed to the establishment during this period of 'Pride of Dinmore no.40' (Dinmore, Ipswich). By the turn of the century, however, prosperity was again on the rise and lodges, including 'Pride of the North no.23', were making steady progress. An offshoot of 'True Blue no.8', 'John Wycliffe no.25', had been formed at Blackstone in 1890 and already its annual tea meetings were an integral part of members' social life. Queensland could also now boast two female lodges: 'Queen Victoria no. 51' in Fortitude Valley and 'Evening Star no. 52' at Woolloongabba. An attempt to form a female lodge in Ipswich had failed. At the end of 1905 total PAFSOA membership in Queensland stood at 5,011, an increase of nearly 2,000 over the past decade. That same year 'Pride of the North' was honoured by the election of member Bro. J. Reid as Worshipful Grand Master.

In 1902, 'Pride of the North' members voted to become involved in a joint venture with other Friendly Societies to establish a dispensary which would serve all members' mutual interests and operate under the management of an executive committee. Known as the Friendly Societies Dispensary, the premises opened in Brisbane Street, Ipswich in mid-1904. Society members were levied an extra 2/6 a quarter. The dispensary also served the general public.

As the first decade of the new century drew to a close there was a flurry of expansionist activity. Nine new lodges were established even as wider social developments were presenting the Friendly Society movement with challenges that would inevitably affect their memberships. The developments included the introduction of, first, the Queensland state age pension scheme in June 1908 and then the Commonwealth invalid and old age pension scheme which, from 15 April 1909, paid 10/- a week to eligible men and women at age 65. For its own part, in mid-1911 'Pride of the North no.23' introduced a new rule which entitled each member, on joining, to full funeral benefits. Membership continued to grow slowly until, towards the end of 1913, the lodge experienced a loss of members following the establishment of 'Loyal George no. 79' at Brassall. Following the official opening meeting in the Methodist Church, Brassall on 29 October, Brother Archibald Jeffrey was elected Worshipful Master. In the spirit of mutual support, 'Pride of the North' and 'True Blue no.8' lodges gave donations towards the success of the new lodge. Local physician Dr J. A. Cameron was elected lodge medical officer. The Friendly Societies Dispensary would serve as chemist.

World War 1 also had a big impact on the membership of all Friendly Societies. Shortly after the war's outbreak - and in anticipation of an early Allied victory - the PAFSOA Grand Executive decided to pay the contributions of all soldier members for the duration of the conflict and to raise a special Patriotic Fund to aid any widow and orphan. All lodge members were asked to contribute 2/6 towards the fund. As the war dragged on, these would turn out to be costly if effective exercises: overall, the war was estimated to have cost the Society £15,769. A total of 1,294 PAFSOA members in Queensland enlisted, of whom 226 were killed, ten from 'Pride of the North no.23'. In December 1917 the lodge unveiled an honour board - 'an artistic piece of work in brass' - at the

Olympic Hall, North Ipswich to perpetuate the names of the fallen.

For most of the war's duration and beyond there was a steady increase in PAFSOA membership numbers, a result in large part of a decision by the Grand Council in April 1915 to admit females as benefit members of male lodges. By 1918 there were 310 female members across the state. Between December 1913 and December 1918, 'Pride of the North no.23' gained 32 members in total (male and female). The number of lodges - and thus total membership - also continued to grow during the post-war years. In 1924 PAFSOA initiated their 10,000th member.

'Pride of the North no.23' was again honoured in 1926 by the election of member Bro. R. E. Mason as Worshipful Grand Master. Soon, however, all lodges were facing the effects of the Depression. 'Pride of the North no.23', like PAFSs in other mining districts, found itself particularly vulnerable to economic trends and was soon dipping into its funds to help deserving cases. In April 1921 members were asked to contribute a levy of 1/- to maintain the membership of those brethren who were 'out of work owing to the retrenchment'. Membership declined from 347 in June 1927 to a low point of 317 in June 1934, before beginning to recover.

PAFSOA attempted to offset any membership losses by promoting Juvenile Lodges. The movement quickly spread and by mid-1931 eleven such lodges were working under charter. In Ipswich, 'Pride of the North no.23' nurtured 'Star of the North' and for a time membership of the new juvenile lodges increased exponentially, from 16 in June 1931 to 53 by the following December. In total, juvenile membership climbed from 2,633 in June 1932 to 2,822 in June 1934. The then Worshipful Grand Master Bro. T. French observed: '...we look upon these Juvenile Lodges as a nursery, as it were, for our Adult Lodges...'. Initially, juvenile membership more than offset decreases in adult memberships, but the movement proved short-lived: membership peaked at 2,960 in 1936 and by 1938 was in decline. Barely a quarter of juveniles who left the movement on their 16th birthday were transferring to an adult lodge. From the mid-1930s the greying membership became a problem for all friendly societies. In the decade to 1932 the amounts dispensed from Society coffers in sick pay had almost doubled, a proportion not matched by membership levels.

During World War 2 the PAFSOA again established a Patriotic Fund to assist members who volunteered for service and needy widows and orphans of the deceased. A total of 2,175 Queensland PAFSOA male and female members served, including 51 from 'Pride of the North no.23'. Sixty-three PAFS members lost their lives, including 2 from 'Pride of the North no.23'. In May 1942 the lodge was advised that the military authorities had taken over its usual meeting place, the Olympic Hall in North Ipswich, forcing members to relocate to St Andrew's Presbyterian School Hall, there to contemplate how to meet the challenges of a changed world and a more pragmatic membership base. The drive for new members was such that in February 1941 my great uncle Bro. Walter Hastie (1884-1982), who had been a member since 1907, donated a

trophy to be awarded to the member who introduced the most new members over the ensuing twelve months, with a minimum of five. It proved to be a tall order. A more positive note was struck by the Ipswich and West Moreton Friendly Societies Dispensary, which was experiencing boom times (and would continue to do so well into the 1960s).

Ironically, seventy years of careful nurturing of the balance sheets had left the PAFSOA financially solid, even as its significance as a social and religious entity was in decline. An all-time membership peak of 13,174 was achieved by 30 June 1947, after which almost every successive year saw a decline. In November 1947 the last new lodge in Queensland was inaugurated, 'Century no.100' in Oakey, neatly rounding out PAFS's enumerated branches. In a sign of the times, the lodge failed to thrive and closed less than a decade later, in April 1956. The post-war years were doubtless a difficult time for those to whom the PAFSOA philosophical, religious and fraternal ideals had been held dear. Change and the pace of change, were inexorable. The Social Services Act of 1944 introduced benefits partially covering expenses incurred through illness and the need for medicine, thus encroaching on fields previously covered by the friendly societies. As early as 1948 one-time Worshipful Grand Master George H. Shillito was harking back wistfully to a time when 'the members of our Friendly Societies provided themselves for the rainy days and old age and did not look to the Government...' In truth, once members found themselves enrolled by default in a national health scheme run by the Commonwealth Government, there was no longer a place for a fraternal association based on health insurance; (The introduction of Medibank in July 1975 would only reinforce this reality.)

A further blow to PAFSOA interests in members' health was dealt in 1951 when the British Medical Association in Queensland decided unilaterally to terminate all contracts their member doctors had with lodges. The Grand Executive referred to it as 'the most devastating decision that has ever been made in the history of the Movement'. Although the Society attempted to make alternative arrangements, members again left in droves. In Ipswich, the diminishing role of lodges in everyday life was further evidenced by the *Queensland Times* decision to drop regular lodge reporting from its pages. 'Pride of the North no.23' was also forced to respond to the increasingly poor attendance of lodge members at their brothers' funerals by appointing Bro. J. H. Newell as the standing representative for such occasions.

On another front, religious integration and social harmony were being actively encouraged, leading to PAFSOA's uncompromising rules in respect of Catholics being gradually relaxed. By the mid-1960s members were allowed to have spouses who were not Protestant, and to remain in the Society if any of their children married a Catholic. Outward demonstrations of PAFSOA religious affiliations were also out of favour. In December 1961 'Pride of the North no.23' Secretary Bro. Walter S. Hastie said he would personally oppose PAFSOA participation in future church parades despite their long and honourable tradition.

As late as the mid-1970s lodge social functions continued to enjoy reasonable patronage, even if attendance at lodge meetings was in decline. Over time, however, even the fraternal side of lodge life declined in significance as community-oriented service clubs proliferated. By June 1977 total lodge membership stood at 9,909, the first time since 1919 that numbers were below 10,000. Desperate measures including the offer of low-cost housing loans to members, speculative investment in real estate, cooperative ventures with other friendly societies, rule changes and even promotional bumper stickers were not enough to stem the loss of members or ensure lodges' ultimate survival. On a single day in May 1990 thirty-one lodges closed simultaneously. Over time Commonwealth and State legislation was also dramatically changing the nature, scope and operations of all friendly societies. Eventually it became evident to all concerned that the vital role they had once played in the lives of ordinary folk was at an end and to all intents and purposes they quietly faded into history.



PAFSOA No 8 Roll of Honour Board Ipswich RSL Sub Branch

Courtesy Picture Ipswich

NOTE:

In researching this article I have drawn on not only the pages of The Queensland Times but also Brian Stevenson's comprehensive book, 'Let Brotherly Love Continue' (Boolarong Press, Brisbane 1994). I recommend the book to anyone wishing to delve further into the history of the Protestant Alliance Friendly Society in Queensland. It is also worth mentioning that Brian Stevenson pays tribute to the 'selfless labours' of a long succession of secretaries who for 90 years reported conscientiously and legibly on fortnightly meetings of the 'Pride of the North no. 23' lodge. He credits their efforts with resulting in a carefully preserved 'rich mother lode' of material he drew on in tracing PAFSOA matters at the Branch level over a period of history stretching from the Sudan Campaign to the dismissal of the Whitlam Government. *Brian*



WEDDINGS FROM THE PAST

From the Editor's collection

1913 Albert Frederick William MULLER
& Amey Lovelie HOWARD

1938 Frederick John
VOLKER & Marjorie
Joyce LE GOOD



*The best things in life are the PEOPLE we love
The PLACES we've been
And the MEMORIES we've made along the way.*

Extract from Queensland Places & Wikipedia on the net:

EBBW VALE – A LITTLE HISTORY

The small suburb of Ebbw Vale is on the eastern side of the City of Ipswich and was named for the town in Wales by the Welsh coal miners who arrived in the area in the mid 1800's. A colliery opened in the area in 1877 by John JONES, was named Ebbw Vale.

It is said to be the smallest suburb in the city.

The STAFFORD brothers William, Joseph, John and James owned the Whitwood Colliery, having sunk the Whitwood number 1 shaft near the end of Whitwood Road, Ebbw Vale in 1887. A rail siding was built for the colliery in 1889 and in the early 1890s the owners of the Whitwood Colliery made land available for their employees to use as a football ground first known as the Whitwood ground later Ebbw Vale Memorial Park and soccer has been played at this venue since that time, together with other sports.

Several collieries had football teams formed by miners including STAFFORD brothers at Dinmore, WRIGHT's at Tivoli and Lewis THOMAS at Blackstone. Reported in the Queensland Times, that on 5 July 1892, a soccer game was played at the grounds and the home team was a combination of players from the Bush Rats Dinmore and Whitwood teams.

By 1893, the grounds became known as 'St Helens' and this name was later used for the football team itself. The nearby railway station opened in 1909 and was called St Helens, but the name changed to Ebbw Vale the following year. St Helens merged with Coalstars Soccer Club in 1997 to form the Ipswich Knights, but the soccer ground is still referred to by the older local residents as St Helens.

In 1924, the Council of the Shire of Moreton acquired the land, although the mining rights below 70 feet continued with the colliery, the grounds were maintained by "Trustees", a group from the local community, and over time generations of the same families continued the tradition. Ebbw Vale became a suburb of Ipswich in 1949 and in 1971 a new certificate of title was issued to the Council of the City of Ipswich, and the grounds have continued to be used as a sports field.

The local War Memorial was erected near the Railway Station by residents of Ebbw Vale to show their appreciation to the gallant soldiers on their return and to honour those who paid the ultimate sacrifice. This Memorial was unveiled by His Excellency Sir Hamilton GOULD-ADAMS, GCMC, CB, 11 May 1918. Plaques list 22 names, and three of these men did not return. The Memorial was moved to the grounds when Brisbane Road became four lanes in 1969, and includes the names of several soccer team members including William JEFFREY, Peter JEFFREY and H. MILLS.

Brittain's Bricks and Pipes opened in Ebbw Vale about 1880, remaining

there until 1900 when it was moved to Darra. The Dinmore Pottery was opened in the 1880s on the site of the Ebbw Vale colliery, and in 1887 the Whitwood colliery, near the siding, and the Reliance Pottery in Cairns Road were opened. The pottery site has revealed a rich fossil field and complex geological remains. Much later (1911) the Ebbw Vale Brick Co north of the railway station was opened, diversifying into clay pipes and sanitary ware.

Extract from QT 27th Nov 1911

ST. ANNE'S ROMAN CATHOLIC CHURCH OPENING AND DEDICATION CEREMONY BY BISHOP DUHIG

“Thanks to the generosity of the late Mrs. Ann BERGIN who resided at Dinmore for so many years, the Roman Catholics have now a church in their midst. The land on which the building stands was generously given for the purpose by the deceased lady. She also donated a sum of £50 towards the erection of the church. The ceremony of opening and dedicating the church to St. Anne was performed with due solemnity by his Lordship Bishop DUHIG, who was accompanied by the revered parish priest the Rev. A. HORAN, and the Rev. P. BRADY.

The church is located on the eastern slope of a hill but a few hundred yards from the Ebbw Vale railway station, and faces the main Brisbane-road. The church measures 36ft by 28ft, and is provided with three porches and also a sacristy at the rear. The contractors were Messrs. Buchanan and Sherman who did their work to the satisfaction of those concerned.

The altar was the work of Mr W.CAFFERKY, of Ipswich. Two appropriate pictures on either side of the altar were kindly donated by W. T. BYRNES, whilst the picture of the crucifixion, was given by a friend in honour of the late Mrs. A. BERGIN. The preparations for the ceremony were left in the hands of a committee, of whom Mr. Patrick PIERCE was the chairman Mr. W.POTTS being the treasurer, and they are to be complimented on the perfectness of the arrangements. The luncheon was provided by the ladies, whose efforts were much appreciated.

The gathering of local residents was augmented by a representative contingent from Ipswich. A number of the visitors travelled by train to Ebbw Vale, and others drove to the church. Between 20 and 30 members of the Ipswich branch of the H.A.C.B. Society, including the President (Bro. Jas. COSTELLO), the Vice President. (Bro. P. D. LANDY) the secretary (Bro. J. P. GILMORE), and the treasurer (Bro. R. P. CAMPBELL), attended in regalia, and formed a guard of honour to his Lordship Bishop DUHIG. A procession formed by the Bishop the Rev. A. HORAN and P. BRADY, and acolytes, proceeded round the exterior of the church, the crozier being carried at the head of the procession.

Having entered by the front door of the sacred building the Bishop and the priests proceeded to the altar. The choir from St. Mary's Church Ipswich was in attendance, and rendered appropriate music under the baton of Mr. G. W. RYLATT, Miss Kate SHINE presiding at the organ. Subsequent to the ceremony of blessing and dedicating the church the 11 o'clock mass was celebrated by the Rev. P. BRADY at the conclusion of which a sermon was preached by the Bishop, who then delivered an eloquent sermon."



The Bishop spoke of opening four or five churches for Rev A. HORAN who had been opening new churches at the rate of one per year. The priest could never have done this were it not for the faith, and generosity of the people.

Father Horan with his horse and Carriage Courtesy Picture Ipswich

The Bishop had travelled over 16,000 miles on ecclesiastical duty and had been from Cunnamulla in the south-west to Cloncurry in the north-west, and everywhere, even in the most remote towns, he was delighted to find the wonderful progress that religion was making. They had built not only churches, but also Catholic schools and charitable institutions. In his own poor diocese of Rockhampton where in many cases the parishes were 300 miles apart they had spent since he became Bishop very nearly £60,000 in paying off debts on buildings and erecting new churches and schools.

He was glad to be back amongst the people of Dinmore, where, in the late Mrs. Bergin's house, he had celebrated mass month after month and he could bear testimony to the faith and piety of the people who took time off from their daily work to attend mass and sacraments. Their children would now have that church to come and hear mass and he was sure that young and old would make the best possible use of the church.

His Lordship and the Rev. A. Horan then waited upon the members of the congregation individually, and solicited donations towards the church funds.

Do not take life too seriously; you will never get out of it alive.

Reprint from Bremer Echoes September 2013

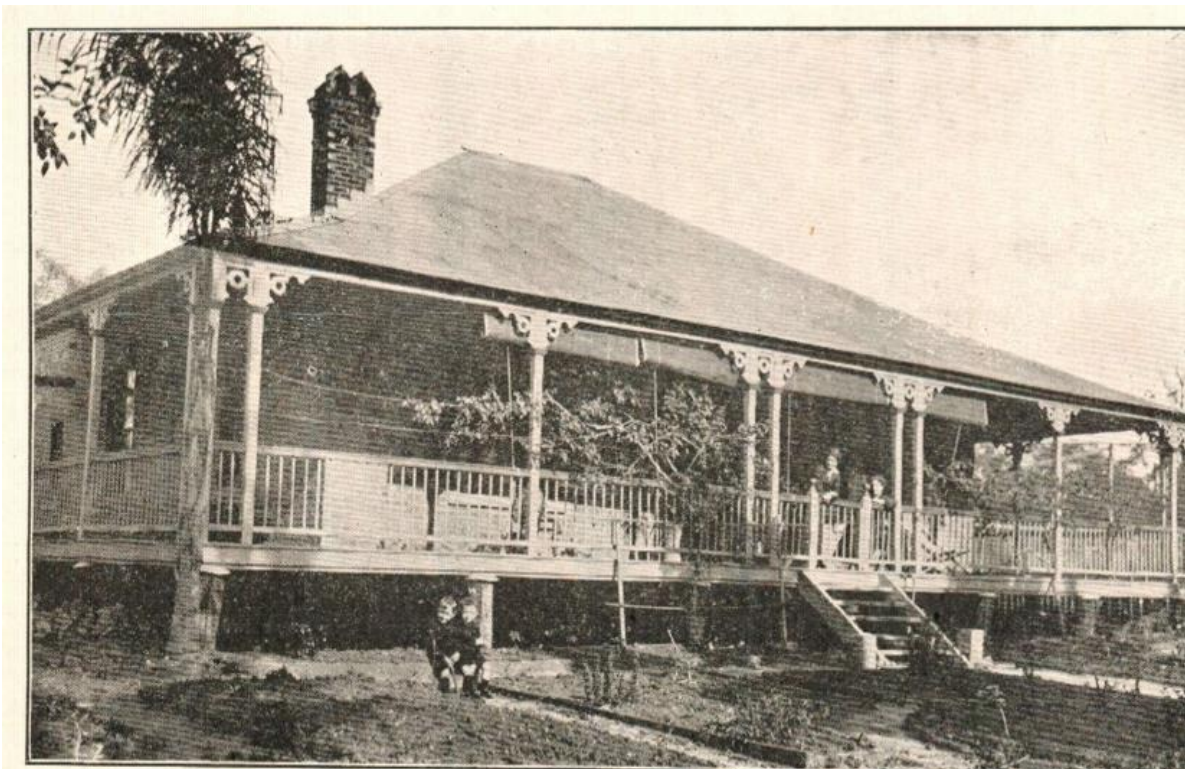
A HOUSE WITH A HISTORY

From History of Queensland Its People & Industries Vol 1

Behind a solid brick fence on Brisbane Road, Ebbw Vale, Ipswich, stands a brick home that is said to have been built for Mr C. AGNEW a brickworks proprietor about 1875, and the bricks are unusual as they have flecks of a purple colour.

In the 1890's "Sandhurst" was bought by John STAFFORD, who was the owner of the nearby Whitwood Colliery. He with his wife and thirteen children lived in the home and some of the children were married at "Sandhurst". John died in 1911 and by 1914 the home was occupied by Major William CLATWORTHY, Manager of the Ebbw Vale Brick Company.

William was born in North Devon on 30th August 1863, and arrived in Australia in 1882 on the "Zamora", and as he had served his apprenticeship in the building trade soon found employment. In 1885 he became Manager in Brisbane for the Queensland Brick and Tile Company, until it was liquidated about 1893. In partnership with a number of others, he set up the Virginia Brick Company, and in 1911 it became the Enoggera & Virginia Bricks and Pipes,



Limited at Alderley in Brisbane.

"Sandhurst" pre 1919.

From History of Queensland Its People & Industries Vol 1.

In 1914 William accepted the position of Manager and Engineer for the Ebbw Vale Brick Company Limited and moved into “Sandhurst”. The brickworks also made sanitary pipes and appliances and electrical conduits.

William’s first wife died in 1909, leaving two daughters, and he later married Annie LAWLESS and in 1919 they had a family of two sons and one daughter.

There have been a number of owners over the years, and at times the home looked very sad. Today the house is surrounded by a high brick fence at the front, perhaps in the hope of cutting out some of the noise of passing traffic, and wooden fences on the other sides. The house is basically as it was first built, with wide verandahs and little change to the exterior.

Still growing in the front of the house is a very unusual tree – an African Sausage Tree. The fruit on the tree grow very big and resemble a sausage, on a long stem. It would appear the tree has been there for many years, perhaps as far back as the early 1900’s. Some of the other old trees have been lost, as have the original buggy sheds. Over time the large grounds have been sold off and the house stands now in the centre of a large suburban lot.

Since the house was built, it has seen many changes, from the days of horse and buggy and a dirt road out the front, to a narrow bitumen road and now to a busy four lane carriageway.

Hopefully “Sandhurst” will remain a part of Ebbw Vale for many years.



*“Sandhurst” 1991”Ipswich Heritage Study,
Courtesy Picture Ipswich*

CHANGES AT EBBW VALE OVER THE YEARS

In 1960 my husband and I built our home in Ebbw Vale. We have seen many changes over the years including –

What was once a two lane road which joined Brisbane and Ipswich, and carried all the traffic to Toowoomba and Warwick – [this was the main road connecting the Darling Downs and Brisbane therefore if you were using the inland road to Sydney from Brisbane you passed through Ipswich] and is now a four lane highway. Today traffic can by-pass Ipswich and use the Cunningham Highway to the south or the Warrego Highway to the west or central parts of Queensland.



Ebbw Vale has lost St Anne's Church, the Brick Works, the Pipe Works – *demolished in 2000*, the Post Office, the Public Phones, even the Australia Post Letter Box; a drapery shop, corner store, and there was a traffic bridge joining Ebbw Vale to Bundamba which crossed the railway line at the top of the hill, and closed with the construction of the four lane highway in 1969.

2000, Pipe Works Demolition; [Hard to see the brick chimney still standing centre of picture]

Only a few of the pine trees between Brisbane Road and the Railway Station, thought to have been planted after the First World War remain. The Station House has gone and the car park which was said to replace it has never eventuated.

Today the butcher shop remains as does the Miner's Diner aka the Fish Shop, we have Bremer Ford the Ford car dealership, "90210" the hairdresser, Freedom Fuels – originally The Gliderway Service Station, Solahart, shed and caravan sales. Just recently a new cafe has been opened.



"Masters" opened in 2014 in the Bremer Business Park and closed December 2016; there is direct access to the Warrego Highway over the railway line and through the Business Park.

Crossroads opened July 2011

EBBW VALE NEWS FROM THE QUEENSLAND TIMES

Queensland Times Monday 19 March 1923:

EBBW VALE PROGRESS ASSOCIATION: The monthly meeting of the Ebbw Vale and District Progress Association was held at Mr. A. DOBBIE's residence on Friday evening last. The president Mr .A. BUGLER presided. Correspondence was received from Commissioner for Railways in connection with the improved Sunday train service.

The secretary of the Ipswich Chamber of Commerce wrote stating that the annual subscription was now due. It was decided that the subscription be renewed. The Deputy Postmaster General notified that he was prepared to install a public telephone at the railway station. In discussion of this matter, some strong criticism was expressed, as the association was entirely against the proposal. It was finally decided that the offer be rejected.

The annual balance-sheets, duly audited, were presented by the secretary, and showed that the year's work was highly satisfactory. Mr A. DOBBIE complimented the secretary and treasurer on the way the books of the association were kept. The association placed on record appreciation of the work done by the retiring president Mr. R. MILLER.

On the motion of Mr. C. JONES, it was resolved that a letter be sent to the Deputy Postmaster-General's Department requesting that a cabin be erected over the public telephone at the Dinmore Post Office.

Mr. A. BUGLER gave a lengthy report on the business transacted at the Ipswich Chamber of Commerce., which was very interesting. Several of the members spoke on the need for road repairs. It was decided that the next meeting be devoted to a discussion on road improvements.

Queensland Times 14th December 1926

EBBW VALE PROGRESS ASSOCIATION:

The monthly meeting of the Ebbw Vale and District Association was held at the residence of A. Dobbie Ebbw Vale, on Friday night. Consideration was given to the question of the reserve held by the Moreton Council as a park and sports ground, to be controlled, if desired by a committee appointed by the Progress Association, conditional upon their preparedness to carry out such improvements as were necessary from any funds available, and also the use of the rents collected from the sports clubs having use of the grounds. There are no dressing sheds on the ground at present, and a considerable amount of fencing is to be done to make the ground secure.

The area for football required to be ploughed, harrowed and rolled to put it in fair condition. Trees will have to be planted, and a certain amount of seating accommodation provided for spectators. Appreciation was expressed by the meeting of the splendid manner in which the council had met the association

in allowing local control of the park. It was felt that, with 'the assistance of the several clubs, using the grounds, and of the residents, the park could be made a pleasure resort as well.

The mail contractor for ** Bundamba and district was present at the meeting to reply to complaints made in connection with delivery of mail matter. After Mr. King, the contractor, had made an explanation, and others who made complaints had also spoken, a motion was moved and carried that the explanation made by the contractor be accepted. ** now Bundamba

SNIPPITS FROM THE QUEENSLAND TIMES 29th August 1923

Roll of Honour:

HARPER: In fond and loving memory of my brother Private James Frederick Killed in Action in France 29th August 1918. Also Clyde Killed in Action in France 16th September 1918. (Inserted by their loving sister Iva LAYTON)

Funeral:

The friends of Mr N.C. JONES are respectively invited to attend the Funeral of his deceased Wife (Muriel Agnes) to move from the Residence of her Mother (Mrs F.A. WARRELL) Ebbw Vale, at 3 o'clock this afternoon for the Ipswich Cemetery.

F.W. Johnson & Sons Undertakers

[Other notices inserted by – Mother-in law Mrs J.W. JONES ; Uncle – Mr John MILLER; Aunt and cousins – Mrs W.J. MILLER Miss S. & Miss A. TAYLOR]

Football on Sunday:

The subject of Sunday sport was once more introduced at the Meeting of the Ipswich City Council held on Monday. Alderman SHILLITO complained that recently a public football match had been played at the One Mile and asked if the Council had power to stop such proceedings in that locality. Alderman HASTIE said football had also been played at Cribb Park on Sunday.

Alderman EASTON: "You don't call it a football match if the boys are only engaging in a bit of practice."

Alderman SHILLITO: "This was a football match."

Alderman BEARKLEY: "Football or Soccer!"

Alderman SHILLITO's complaint was referred to the parks committee.

Good Manners. The Charm of Courtesy: A Forgotten Virtue.

Good manners have a direct value – "even if they are regarded as rather old fashioned, but there is no doubt that the business girl or the typist seeking promotion would do well to consider the matter".

"However rushed and worried one may be there is surely room for gentleness kindness and mutual good feeling. The pleasant "good morning" to the butcher or baker does not take a moment, but with what different feelings the tradesman goes on his way, from those he feels when greeted merely with a grumble about the price of meat or a special loaf."

In The Kitchen: *{this is as written Ed.}*

Weights and Measures: Simple Accessories.

Sixty drops of liquid makes 1 teaspoonful.

Two teaspoonsful make one dessertspoonful.

Two dessertspoonsful make one tablespoonful.

Four tablespoonsful make one wine glass or 2 ounces.

One common tumbler (*drinking glass Ed.*) holds half a pint.

A full tablespoon of flour makes (approximately) 1 ounce.

A quart of flour makes one pound.

It was suggested – Have a slate hanging in the kitchen in a handy place with a pencil attached, and as necessary duties flash through one's mind they can be jotted down if one is not ready to do them just at the moment. Then it is so useful too, when ordering goods, if things that are required are marked down as soon as the need is discovered, the risk of forgetting when the order man calls is obviated.

Advertisements appeared for:

Bushells Tea

King Tea;

Hearne's Bronchitis Cure;

Chamberlain's Cough Remedy;

Scott's Emulsion;

California Syrup of Figs - Childs Best Laxative;

Thistle Shirts;

CRIBB & FOOTE - the Universal Providers by Mail

J.B. COLTHUP – the People's House Furnishers, Nicholas St;

A.E. WHITEHEAD – Chemist Nicholas Street

W.F.S. FOX – Chemist Brisbane Street

P.L. CARDEW & H.G. SIMPSON – Solicitors visit Harrisville every Monday;

C.W.L. HEINER & H.H. HOOPER – Solicitors, Town Hall Chambers;

PARKER, SON & CO – Tailors Brisbane Street

W.H. BUNNETT – Dentist Brisbane St.[opposite St Paul's Church]

Dr H.D. FOOTE & Dr F.L. FOOTE – Dental Surgeons, City Chambers

Nicholas St;

////////////////////////////////////

RULES FOR TEACHERS IN 1879: [Source unknown]

Women teachers who marry or engage in unseemly conduct will be dismissed

Teachers each day will fill lamps, clean chimneys before beginning work.

Men teachers may take one evening each week for courting purposes, or two evenings a week if they go to church regularly.

Any teacher who smokes, uses liquor in any form, frequents pool or public halls, or gets shaved in a barber shop, will give good reason to suspect his worth, intention, integrity and honesty.

From the internet – “The History of the Queensland Times” - The Ipswich newspaper was first published on July 4 1859 as The Ipswich Herald, and the name was changed to The Queensland Times on October 8 1861. A well-known early staff member Tom BARKER, was born in Ipswich in the 1850s and wrote many important historical articles under the names "Red Gum" and "Old Sport".

Queensland Times 5th July 1913 "THE GLORIOUS FOURTH"

“Yesterday,” writes ‘Red Gum’, “was the 54th anniversary of the establishment of what is now the daily "Queensland Times," and the gentleman who was principally responsible for the publication of 'The Ipswich Herald' on the 4th of July 1859, is still a resident of Brisbane, namely, Mr. Edmund GREGORY, who was born in London on the 2nd of April, 1832.

Subsequent to arriving in Sydney, Mr. GREGORY was employed on the 'Sydney Morning Herald,' in which office he was personally engaged by the late Hon. Arthur MACALISTER (one time Premier of this State) to come to Ipswich to establish a newspaper in opposition to the 'North Australian,' the chief object of the new publication being the attainment of separation from New South Wales.

Mr. Gregory faithfully carried out his part of the business, and the first copy of 'The Ipswich Herald' was issued on the 4th of July, 1859.

This was the fourth newspaper in existence in Moreton Bay at that time, the 'Moreton Bay Courier,' Brisbane; the 'North Australian,' Ipswich ; and the Darling Downs' Gazette,' Toowoomba, being the others.

Fifty-four years ago the "Ipswich Herald" appeared only once a week. Mr. GREGORY remained in Ipswich for 18 months, when he removed to Brisbane to accept an engagement on the 'Brisbane Courier,' subsequently joining the staff of the Government Printing-Office, where he remained till his retirement, filling the positions of both overseer and Government Printer for 35 years.

Mr. GREGORY is still a link with the publication of the 'Ipswich Herald,' which, on the 8th of October, 1861, merged into the 'Queensland Times,' and which journal has now practically been 'going' for 54 years."



*The first Queensland Times Building
1859*

By Stella Gibbs 1988

Queensland Times 27th September 1921 **GRAMMAR SCHOOL ANNIVERSARY**

“Time is creeping on, and (writes ‘Red Gum’) I am reminded of the fact that, Sunday last, the 25th of September, was the 68th anniversary of the opening of the first Grammar School established in Queensland, the inaugural ceremony having taken place at the Ipswich institution on the 25th of September, 1863, on which date the late Sir George Ferguson BOWEN, the pioneer Governor of this State, officiated.

Ipswich has been the birthplace of many institutions and industries (including the inauguration of the Queensland railway system), but to have the honour of establishing a Grammar School in the centre of "Modern Athens" has always been regarded as "a big feather" in the caps of Ipswichians.

All credit then, to the members of the old Ipswich brigade, comprised as it was of the old colonial hard workers. The name of the first head master of the Ipswich Grammar School was Mr. Stuart HAWTHORNE, M.A., who reigned in authority until the end of 1868, the succeeding headmasters having been Messrs. John MACRAE, M.A., Donald CAMERON, M.A. (from July, 1875, to December, 1900, with an excellent record), C. A. FLINT, M.A., and B. G. LAURANCE, M.A., up to the advent of Mr. B. A. KERR, M.A.

There are alas, very few of the old residents who were responsible for the foundation of the grammar school now in our midst. Nevertheless the school has made its mark on the State, not only in Queensland, but throughout the various States of the Commonwealth, which gratifying result is chiefly due to the efforts of that great and good teacher, the late Mr. Donald CAMERON.

In every sphere of life, the Ipswich Grammar School students have had distinguished careers. Even as soldiers, the Ipswich Grammarians have fully upheld the honour of the old school during the recent European War - aye, and some have remained, and will remain forever on that Gallipoli peninsular----Anzac heroes.

The Ipswich Grammar-School has played a noble part during the past half century, and the hope may be sincerely expressed, may it continue to do so for centuries to come.”

The Ipswich Grammar School from the air 2011 Editor's Collection & Picture Ipswich





*The Ipswich
Genealogical Society is
now established at
Cooneana Heritage
Centre with the
support of the Ipswich
City Council. Members
thank the Council for
their support.*

*All members of the Ipswich Genealogical Society,
Past and present are invited to*

OPEN HOUSE

*Venue: "Brigg House", Cooneana Heritage Centre,
1041 Redbank Plains Road,
New Chum 4303*

*Date: Friday 24th March 2017
9.00 am to 2.00 pm*

*During the course of the morning, The Mayor Paul Pisasale
will officially open "Brigg House"*

*Contact- "Brigg House" 07 3282 6454
President Irma Deas 07 3282 3067
Vice-President Claire Juler 0407 690898*

Email: secretary@igs.org.au



PUBLICATIONS AVAILABLE

Write to the Secretary PO Box 323, Ipswich Q 4305

INDEX TO IPSWICH CEMETERY BURIAL REGISTER 1847 – 2014

**Over 36,000 records giving full name, age, death and burial dates
where available 1 CD - \$20.00 + \$6.00 P&P**

BIRTH, DEATH & MARRIAGE EXTRACTS 1858 – 1865 from The North Australian & Ipswich General Advertiser. \$10 + \$10.00 P&P in Australia

CITIZENS OF IPSWICH - 1904 Names of Ipswich citizens in 1904 taken from Available Church Records - Baptisms, Deaths and Marriages, Electoral Rolls, Post Office Directory, Available School Rolls, Queensland Times Reports.
\$10 + \$10.00 P&P in Australia

IPSWICH & DISTRICT PIONEER REGISTER - pre 1914; Pioneer Families of the Ipswich, Gatton, Laidley, Boonah and Esk areas of Queensland.

Please note prices: Set Volumes 1 & 2 - \$10 + \$18 P&P in Australia

JUBILEE HISTORY OF IPSWICH 1910 Commemorates the Jubilee of Municipal Government. Reproduced on CD from the original 157 page book \$19.50 (\$6.00 P&P)

.....

Bremer Echoes can now be sent electronically, and if you would be willing to accept it in this form, and do not receive it this way at present, please contact the Society.

The IPSWICH GENEALOGICAL SOCIETY INC. does not accept responsibility for opinions expressed in this magazine.

MANAGEMENT COMMITTEE 2016 - 2017

Patron	Ipswich City Councillor Kylie STONEMAN	
President	Irma DEAS	3282.3067
Vice President	Claire JULER	0407690898
General Secretary	Elizabeth FORSYTH	3201.6889
Treasurer	Eric CLARKE	3201.4192
Librarian	Angela YARHAM	3288.8088
Magazine Editor	Irma DEAS	3282.3067
	email: secretary@igs.org.au	
Committee Members	Yolande JAMES	3202.1954
	Edith HENRY	3202.1023
	Chris LLOYD	3281.5084
	Michael O'REILLY	3288.9686
Research Officer		
Membership Secretary & Roster Co-ordinator	Claire JULER	0407690898
Scrapbook Compiler BD&M and General News	Judy-Ann SMITH	3202.3597



Do you need: Screen printing on that special T Shirt?

Your name on a garment?

A set of towels with names of the bride and groom, for a special gift?

Help to design a new logo?

Call and visit Peter Wyman at -

BIG HIT TEAM

Shop 7, Bell Arcade, Bell Street, Ipswich

3282 1108

////////////////////

*With Thanks to the office of Division 4
 Councillor Kylie Stoneman for the
 assistance in the printing of Bremer Echoes.*